

BATIMAT®

RUSSIA

digest

THE BEST IN ARCHITECTURE, DECOR, DESIGN

Sergey Kuznetsov, Zaha Hadid Architects,
Richard Rogers, Alejandro Aravena

WINNERS
OF COMPETITIONS
& AWARDS 2016

DESIGNERS

Nikita Zhilyakov, Elena Pegasova, Antonio Citterio, William Morris, Massimo Santi,
Diego Grandi, Kerama Marazzi, Fabrizio Batoni, Phoenix Design, Ramon Esteve, Christian Benini

*Английское наследие
**Краски и Обои

Little Greene

— PAINT & PAPER 1773 — **



Little Greene
— PAINT & PAPER 1773 — **

Превосходные краски при содействии



ENGLISH HERITAGE *

КРАСКИ

Москва Московская область Санкт-Петербург Абакан Белгород Брянск Воронеж Екатеринбург Иркутск Казань Кемерово Краснодар Красноярск Курск Липецк Нижний Новгород Новосибирск Омск Орел Пенза Ростов-на-Дону Самара Саратов Стерлитамак Тверь Тольятти Тюмень Уфа Чебоксары Якутск БЕЛАРУСЬ Минск УКРАИНА Киев КАЗАХСТАН Алматы Астана

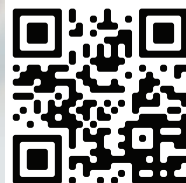
ОБОИ

Москва Московская область Санкт-Петербург Абакан Архангельск Астрахань Балаково Барнаул Белгород Брянск Владимир Волгоград Вологда Воронеж Екатеринбург Иваново Иркутск Казань Калининград Кострома Краснодар Красноярск Липецк Нижний Новгород Новосибирск Омск Орел Пенза Петропавловск-Камчатский Ростов-на-Дону Саранск Саратов Стерлитамак Тольятти Тюмень Уфа Чебоксары Челябинск Якутск БЕЛАРУСЬ Минск УКРАИНА Киев КАЗАХСТАН Алматы Астана

ГЕНЕРАЛЬНЫЙ ДИСТРИБЬЮТОР

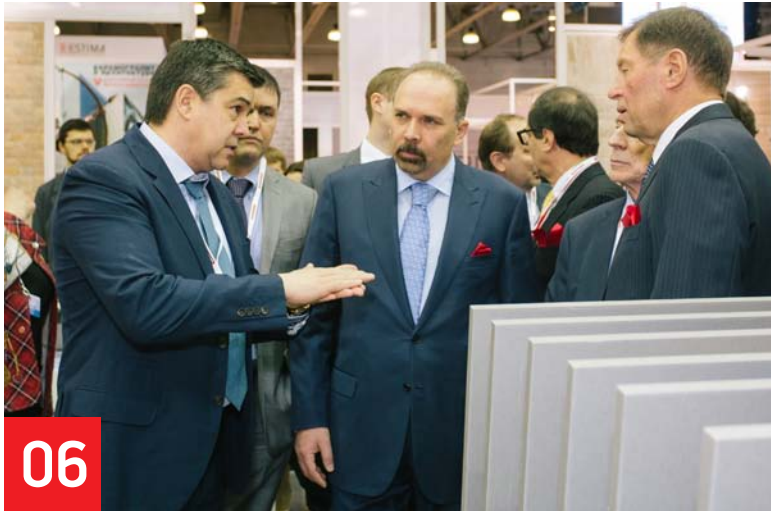
 **MANDERS**
английский декор стен

www.manders.ru



реклама

THE BEST IN ARCHITECTURE, DECOR, DESIGN



06



08



18



34

EVENTS

- 06** Exhibition BATIMAT RUSSIA 2016:
RF Minister of Housing and Public Utilities
Mikhail Men – remarks
at the expo opening
- 08** INNOVATIONS in materials
and technologies.
The latest in building materials

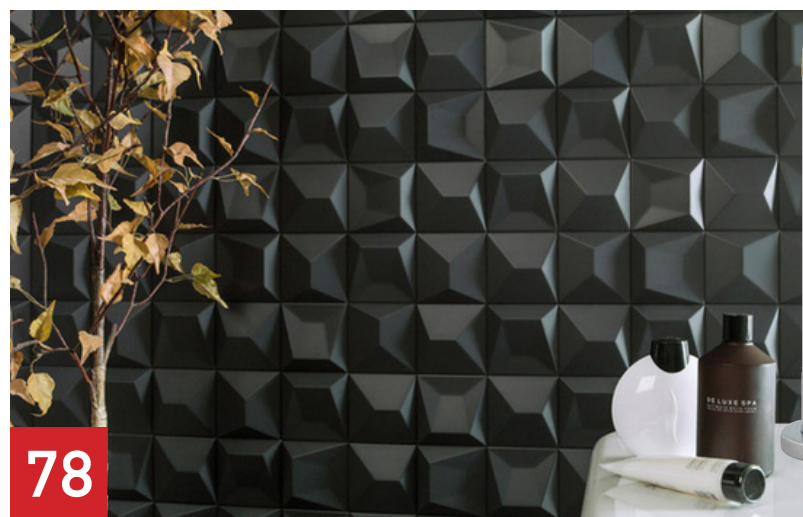
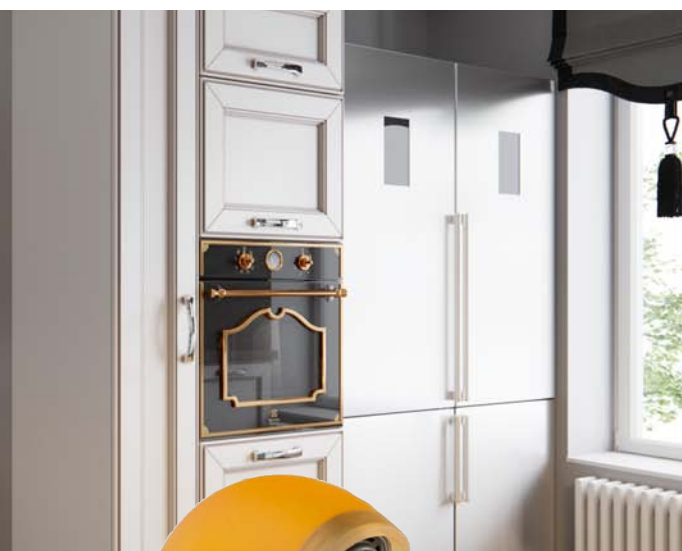
ARCHITECTURE & CONSTRUCTION

- 14** Sergey Kuznetsov
on urban-development policy
- 16** Pritzker Prize 2016
– architect Alejandro Aravena (Chile)
- 22** Sberbank Technopark at Skolkovo
(Russia) – Zaha Hadid Architects
- 26** Mixed-use complex “118”
(Spain) – Amann Canovas Maruri
- 30** Residential complex NEO Bankside
(Great Britain) – Richard Rogers
- 34** Lady Cilento Children’s
Hospital Complex (Australia)
– Lyons + Conrad Gargett
- 56** Farmhouse (Australia)
– CannyArchitecture
- 62** BMW showroom in Chongqing (China)
– Crossboundaries

CONTENTS

INTERNATIONAL COMPETITIONS AND AWARDS

- 38** BATIMAT INSIDE –
architect Nikita Zhilyakov
- 48** REAL INTERIOR –
designer Elena Pegasova
- 66** RedDot – Schüco, Damixa, Viega,
Duravit AG, Dallmer, ZeVa, Corian, Dorma,
Saint-Gobain Glass, Vaillant, REHAU
- 75** iF Design Award – Hilti,
Intercable, Panasonic
- 76** GOOD DESIGN AWARDS –
Walker Zanger, Stone Source



TRENDS IN DESIGN

- 78** Phoenix Design
- 80** Antonio Citterio
- 81** Fabrizio Batoni
- 82** Massimo Santi
- 84** Diego Grandi
- 85** William Morris
- 86** Ramon Esteve

BATIMAT RUSSIA - digest
№1 September – November 2016
Founder: MEDIA GLOBE
Publisher: BATIMAT RUSSIA - CROCUS

Address: 3/2 Per. Kapranova,
Moscow, 123242, Russia
Tel./fax: +7 (495) 961-2262
Website: www.batimat-rus.com
www.mediaglobe.ru

Content and advertising queries:
E-mail: batimat@mediaglobe.ru

Direct circulation:
over 300 000 industry specialists

KERAMA MARAZZI

керамическая плитка • керамический гранит • мозаика • санфарфор и мебель для ванных комнат



Разнообразие
форматов,
более 2000
артикулов

Крупнейший
производитель,
лидер
российского
рынка

Индивидуальный
подход
к архитекторам
и дизайнерам

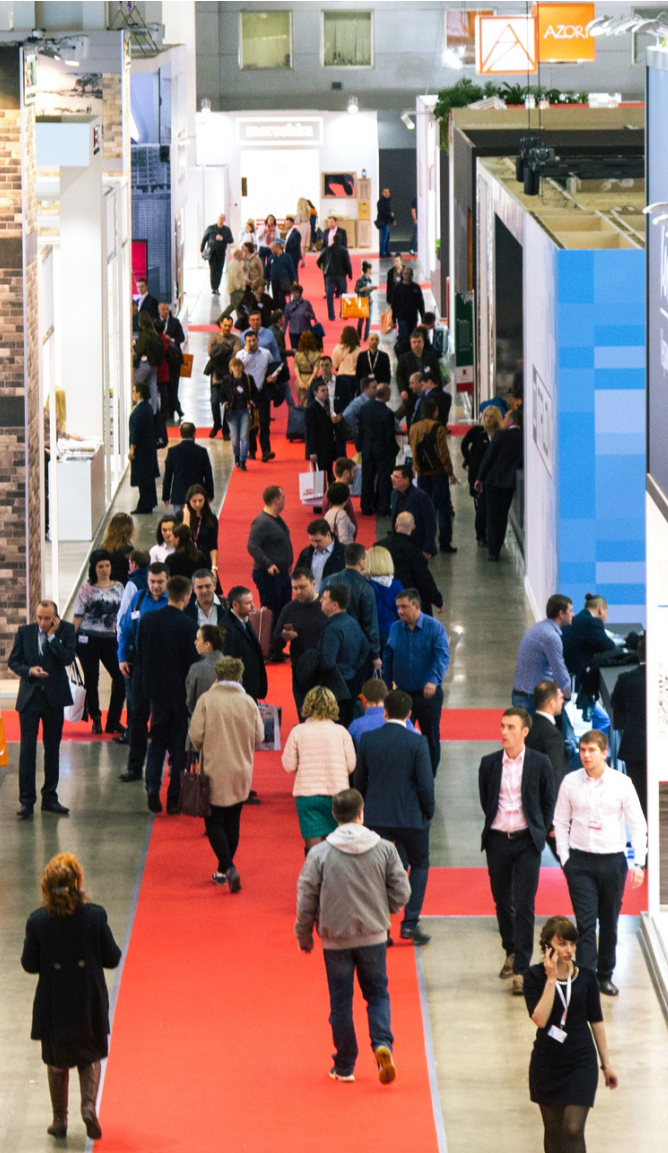
Широкая
цветовая
палитра

Множество
типов
поверхностей

МЫ ЦЕНИМ ВАШУ
ИНДИВИДУАЛЬНОСТЬ

www.kerama-marazzi.com

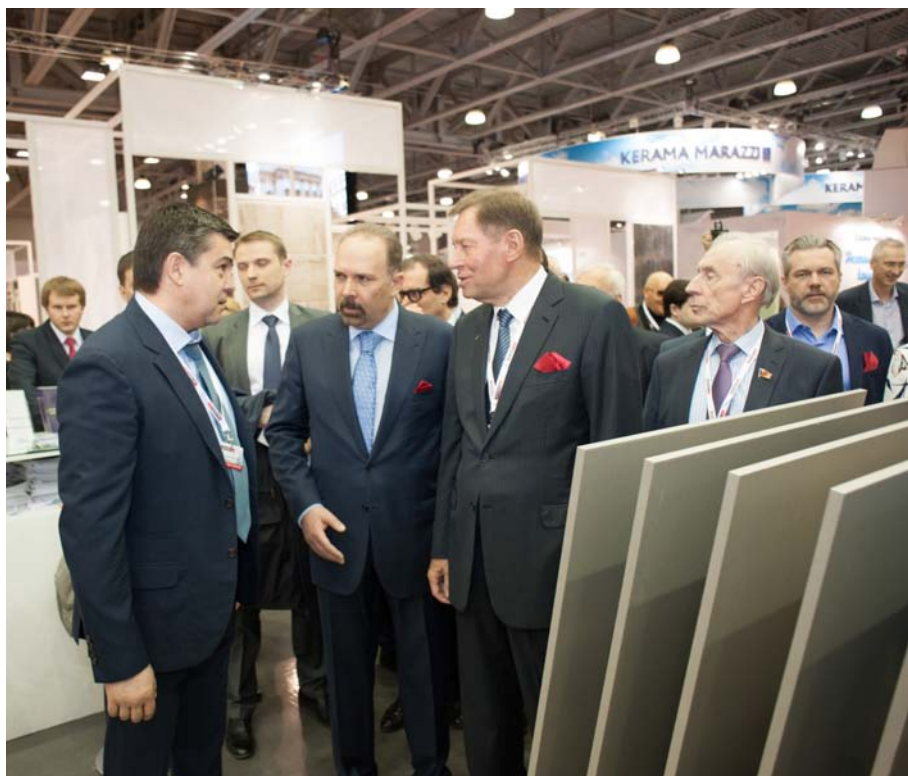
EVENTS



INNOVATIONS IN MATERIALS AND TECHNOLOGIES

The most promising and sought-after advancements in the production of finishing and building materials were showcased at the exhibition BATIMAT RUSSIA 2016

At the opening ceremony for the exhibition BATIMAT RUSSIA 2016, RF Minister of Housing and Public Utilities Mikhail Men remarked: "Today, the production of finishing and building materials is experiencing a dramatic expansion. As we can see, virtually full import-substitution has been reached within the economy-class housing-construction sector. This was largely responsible for the record-breaking result achieved in 2015, when the country built more than 85 million



square meters of housing. Also providing an assist was the government program to subsidize mortgage rates up to 12%, which was implemented by presidential decree. This gave a powerful jolt to the expansion of housing construction, which did not experience a downturn as a number of experts had predicted. This year, the government has decided to extend the mortgage-rate subsidy program, which will continue functioning until year-end 2016." The minister noted the importance

to the ministry of cooperation with the professional and expert communities in terms of serious decision-making, and wished everyone much success and contract-signing at the exhibition. Also speaking at the opening ceremony was the President of the Russian Builders' Association, Vladimir Yakovlev, who stressed that, despite the ongoing economic crisis, "the process of new-technology integration is proceeding apace."

COMPETITION “INNOVATIONS”

The international construction-and-interiors exhibition BATIMAT RUSSIA, in conjunction with the Council of Experts on Interior Design and the Architectural Environment (CEID), held the competition “Innovations” for the third year running. The aim of the competition, held among expo participants, is to spotlight the most promising innovative products, materials and technologies in the areas of architecture, design, construction and decor.

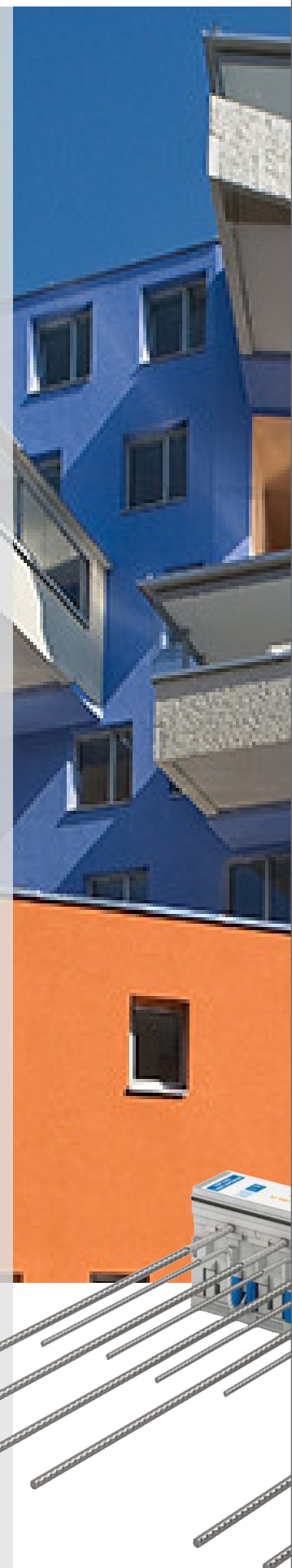
This year’s competition winners were:

- In the “Efficiency” nominating category – a next-generation snow-melting system by Novoproekt
- In the “Breakthrough” nominating category – the innovative material ceramopen by CERAPEN
- In the “Green” nominating category – a “smart” sleeve for the restoration of variously-purposed plumbing systems by UZPT Mayak

In the special nominating category sponsored by the Skolkovo Foundation, the following companies emerged victorious:

- Sotehs, with its design for DEEPIPE Composite – unique next-generation pipes
- SPA Autonomous Solutions, with its design “Energy-efficient autonomous house for the Russian climate, made of standard building materials”
- Thermo Glass, with its design “Thermo Glass heated windows”

By a consensus of market experts, participating in the competition “Innovations” is a fantastic chance to showcase your company to both industry professionals and potential clients, as well as to network and make new business contacts. What’s more, it’s the perfect opportunity to get up-to-date on all of the latest cutting-edge technologies and materials in the area of architecture, construction and design.





The load-bearing thermal-insulating element Schöck Isokorb® provides a thermal barrier separating balconies and other architectural elements projecting outward from the thermal shell of the building, thereby insulating connection points and eliminating thermal bridges. The element is available for the following connections: concrete-concrete, concrete-steel and steel-steel. Schöck has become an indispensable partner in the construction field, offering a wide assortment of standardized breaks for all kinds of buildings, including those used in passive house-building.

Schöck, Germany
www.schoeck.ru

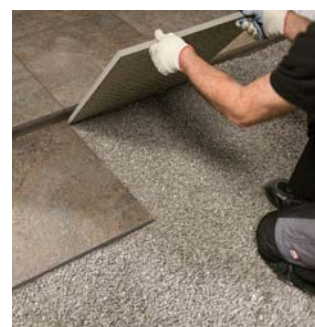
EVENTS

Mobile technology EKSPOBUD® for rapid all-season construction and reconstruction, including smart-walls. Lightweight-concrete, energy-efficient wallboard with a shell made of galvanized steel, featuring embedded utility networks and systems for controlling the microclimate: heating, ventilation, air-conditioning (HVAC) and fire-fighting systems. The project is a resident of the Skolkovo Foundation. **MONORAKURS, Russia, www.monorakurs.by**



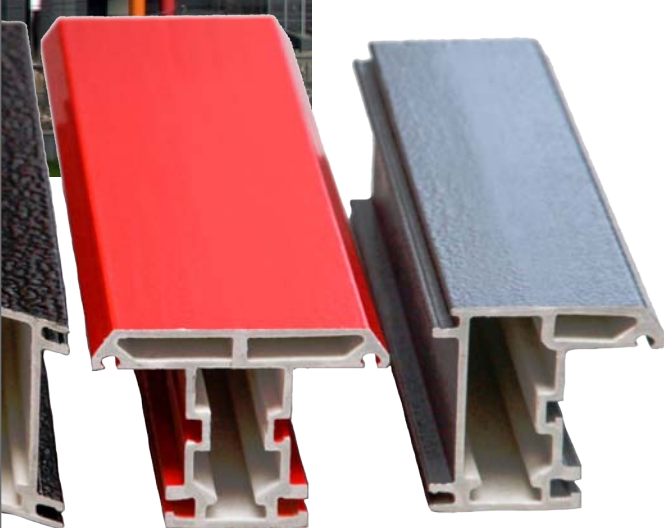
Next-generation snow-melting systems deFrost: paving slabs and anti-slip treatments for entryways with an embedded heating element, as well as innovative solutions for winter water discharge and anti-icing of any difficulty. **Novoproekt, Russia**
www.defrost.su





Italon X2 – the first-ever Russian-made ceramic-porcelain tiles, 2 cm thick. The combination of pressing press-powder made of natural materials and blast-heating at a temperature of over 1220°C yields singularly-durable ceramic-porcelain tiles, resistant to temperature fluctuations, shocks and chemicals/detergents. Italon X2 can be installed both indoors and outdoors.

Italon ceramic-porcelain tile plant, Russia
www.italonx2.ru



Energy-saving fiberglass-composite profile WinPul for the manufacture of translucent structures – a newcomer to the Russian market, featuring cutting-edge profile engineering and finishing technology. WinPul combines the energy-efficiency and durability of aluminium structures with high performance characteristics.

New Composite Materials, Russia
www.winpul-rm.ru



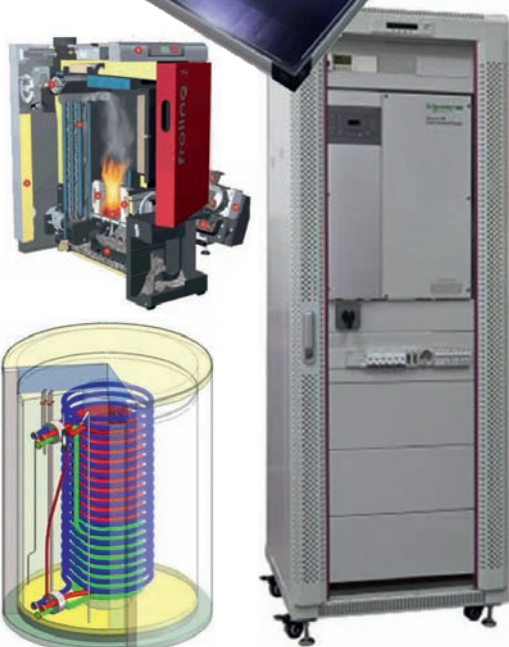
CERAMOPEN boasts a unique array of consumer attributes: energy-efficiency at the passive house-building level, durability, moisture resistance and frost resistance, environmental-friendliness and fire safety; boasts low material and construction costs, operating costs.

CERAPEN, Russia
www.cerapen.com

EVENTS



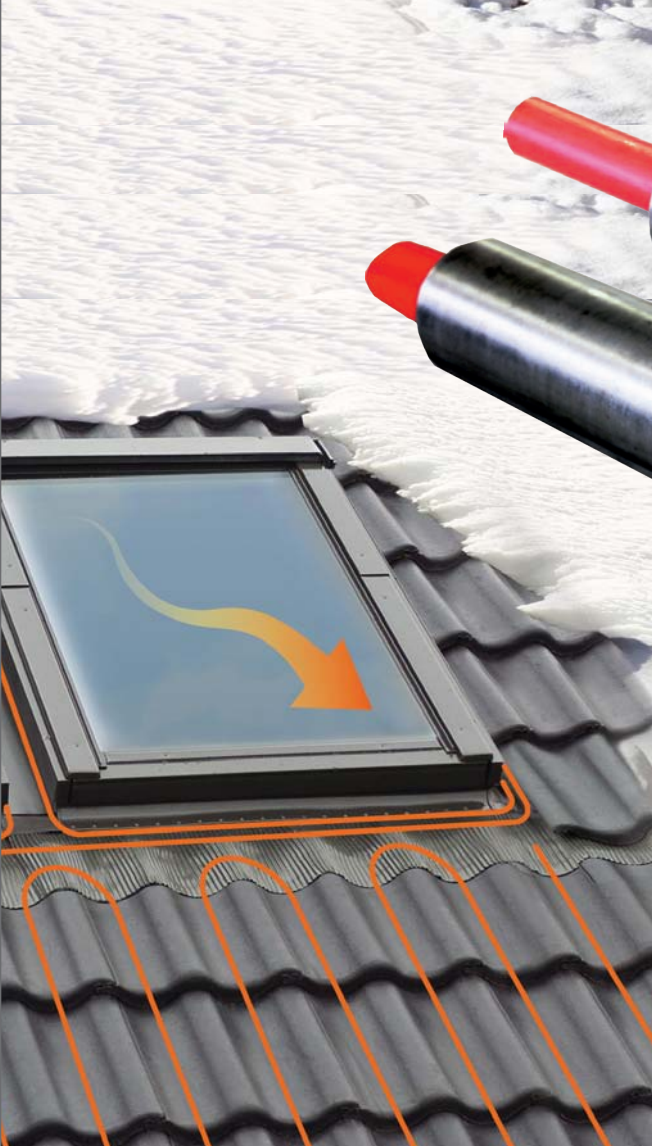
Windows with Thermo Glass heated glass maintain the optimal temperature regime, minimize heat losses, and yield energy savings. The heating is provided by an ultra-thin coating made of conducting metal oxides. The technology for manufacturing the heated windows has been patented and has no market comparables. **Thermo Glass, Russia**
www.термоглас.рф



Energy-efficient house tailor-made for the Russian climate made of standard building materials combining the company's own advancements in terms of autonomous power-supply, heating and construction with the UltraSolar Pro ventilation and solar power-station system for the autonomous power-supply of the home.
SPA Autonomous Solutions, Russia
www.autonomno.ru

The breakthrough UNITILE is intended for the fabrication of glass products with a textile coating finished with an artistic design – canvas paintings with strikingly-textured paint strokes, crackles and shimmer. The products are suitable for use in rooms with fluctuating temperatures and humidity levels.
UNITILE GROUP, Russia
www.unitile.ru





“Smart sleeve” for the restoration of plumbing systems of varying purpose which, thanks to the relaxation properties of distortional molecular bonds, is capable of expanding and giving pipes a new wear-resistant coating. Suitable for the restoration of plumbing systems; does not require digging new trenches or replacing damaged pipes.
UZPT Mayak, Russia
www.polymerpro.ru



Next-generation plumbing systems made of DEEPIPE Composite – composite metalopolymer pipes with elevated flaking resistance. Suitable for use in systems for hot and cold water supply, surface heating and cooling, road and outdoor space heating, pool and greenhouse heating systems.
Sotehs, Russia
www.sotehs.ru

EVENTS



URBAN-DEVELOPMENT POLICY

The Moscow City Architecture Committee has approved the project for a residential complex in Zelenograd, which is to be built on the basis of DSK Grad industrial technology, announced Moscow's Chief Architect, Sergey Kuznetsov.

The new panel series was developed by DSK Grad on order from Morton Group and emerged as one of the modernized pilot products launched by building-construction plants that were approved by the Moscow City Architecture Committee last year.

"The series is based on the technological capabilities of innovative production. The technology allows for all possible layouts, floor-plans, different window shapes and spacing, varying section heights and different combinations of facade color and design," said Kuznetsov about the project. Facades in this series are made of architectural colored concrete with a textured matrix, and the technology makes it possible to make panels in different sizes and configurations, as well as to give them an expressive relief. The facades are given added plasticity thanks to open and enclosed balconies, faced in decorative facade tiling.

Sergey Kuznetsov noted that the issue of developing new series and their variation remains an agenda priority, and said that the Moscow City Architecture Committee's work with building-construction plants in terms of the development of new designs that take into consideration the technical aspects of existing technologies is proceeding, and that further plans for their modernization would continue. Further details at: www.stroi.mos.ru

INTERNATIONAL CONSTRUCTION AND INTERIOR EXHIBITION

BATIMAT®

RUSSIA

Architecture. Construction. Design. Interior.

2017

March 28 – 31

Crocus Expo IEC
Moscow, Russia

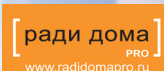


ORGANIZERS:



CROCUS EXPO
International Exhibition Center

GENERAL
INTERNET
PARTNER:



GENERAL
MEDIA
PARTNER:



batimat@mediaglobe.ru

www.batimat-rus.com/en/

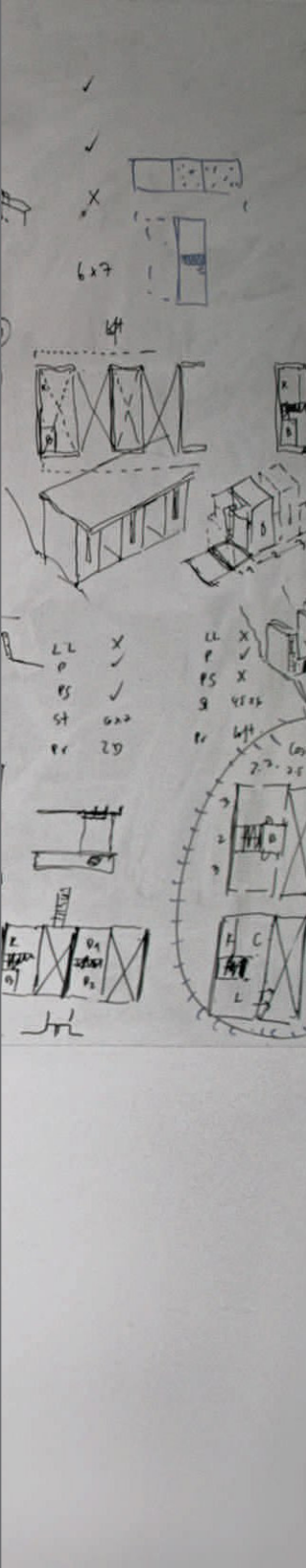
LUVIA
ENDIENTE
PROYECTO SUAVES
STANDARD
PROGRAMA

ARCHITECTURE



*Architect
Alejandro Aravena*

UNORTHODOX APPROACH (CHile)



Innovation Center in Santiago (Chile)

“The construction of public housing is like brain surgery” says Chilean architect Alejandro Aravena, the author of municipal developments in Chile and Mexico. Any error in the design of critical structures is multiplied a thousand-fold and becomes irreversible. Aravena, it seems, has been able to do everything with jeweller’s precision – no wonder his social projects have been awarded the highest architectural prizes.

Countries whose infrastructure is in urgent need of constructive development are throwing down the gauntlet to the world’s best architects, forcing them to find and implement the optimal cutting-edge solutions. In Chile, the need to solve the housing crisis for disadvantaged social groups prompted the creation of “unfinished home” projects. Their author, Alejandro Aravena, brought to life the idea of interactive construction: in collaboration with the future residents, he decided which elements had to be built immediately – and which could be left for the future owners to “grow into.”

ARCHITECTURE



Villa Verde Housing (Chile)



Residential Complex in Montevideo

” Indescript boxes really aren’t bad for a city.
It’s much better than when every building screams but actually says
nothing, because it has nothing to say.

A. Aravena

The architect only designed the universal “shell” of the residence – the finished structures are destined to be absolutely individual in terms of their content, with the proviso that on the outside, they all remain right-angled two-story blocks. The idea – and its execution – have received high praise in the architectural world: Aravena won the Pritzker Prize in 2016.

Pursuing new projects and coming up with previously unheard-of approaches is an important part of the work done by Alejandro Aravena and his architecture studio. The author himself describes the principle thusly: “We try to restrict ourselves to things we only vaguely understand. Knowledge can be paralyzing.”

The latest winner of the Pritzker Prize is responsible for a number of high-profile projects in different cities around the world. Aravena created one of his first original buildings for his Alma Mater – the Episcopal Catholic University in Santiago (Chile). The University’s Math Department is currently housed in “Siamese towers,” splitting into two at the seventh floor. The secret to the structure lies in its double-layering: the inner part, made of fibrous concrete, is regular-shaped and provides stability, while the outer frame, made of glass and aluminium, creates a curved shape. The translucent “framing” of the building allows for the maximum use of natural light. The original shape of the towers is predicated on the limited meterage allocated for the foundation. Only twinning allowed for the structure’s sufficient space and stability. Despite its external fragility, the towers can successfully withstand seismic activity, which is a concern in that region of Chile. The external esthetic of the “twins” was achieved thanks to the use of the silver aluminium finishing one of the towers and the darker aluminium finishing the other. At night, the color difference sets the building strikingly apart against the city skyline.





Torres Siamesas, University in Santiago (Chile)



The Pritzker Prize is the most famous and prestigious award in the field of architecture. The Prize was founded in 1979 by the Chicago millionaire Jay A. Pritzker as compensation for the lack of an architectural nominating category for the Nobel Prize. The Prize is awarded annually to one of today's contemporary architects in recognition for their outstanding designs and service to the public.



Residence complex at St. Edward's University (USA)



Photos: Cristóbal Palma

The Innovation Center in Santiago represents Aravena's attempt to create a timeless building. The structure is designed in the form of a tall atrium, surrounded by groupings of office space, conference halls and meeting rooms. The architect placed his bet on variation among the different interior spaces, placing particular emphasis on the first-floor vestibule. In choosing the Center's external shell, the designers took into consideration the local weather conditions in Santiago, so the sleek and contemporary glass sheath was swapped out for concrete blocks. The solid casing, with its deeply-recessed window openings, keeps out excess sunlight, making it possible to avoid unwanted overheating. In the end, savings on air-conditioning have resulted in a power-consumption reduction of roughly 267% compared to standard designs.

Aravena is also the architect behind the residence complex at St. Edward's University in Austin (Texas, USA). The exterior of the buildings is based on the contrast between the futuristic colored facades made of glass, and the solid walls made of broken brick, laid unevenly on the outward-facing side. The resulting surface is reminiscent of a rough diamond or geode.

For Alejandro Aravena, socially-oriented facilities, be they residences, educational institutions or research establishments, have become a way of expressing the most unexpected architectural ideas – ideas that have found application in many different countries. In recent years, the Pritzker Prize has frequently been used as a way of highlighting the aspiration of architects to solve social problems. The public housing created by Alejandro Aravena has now joined the ranks of Shigeru Ban's buildings at the scene of natural disasters and the lightweight structures of Frei Otto, continuing to drive the architect to serve society at large.



SBERBANK TECHNOPARK AT SKOLKOVO

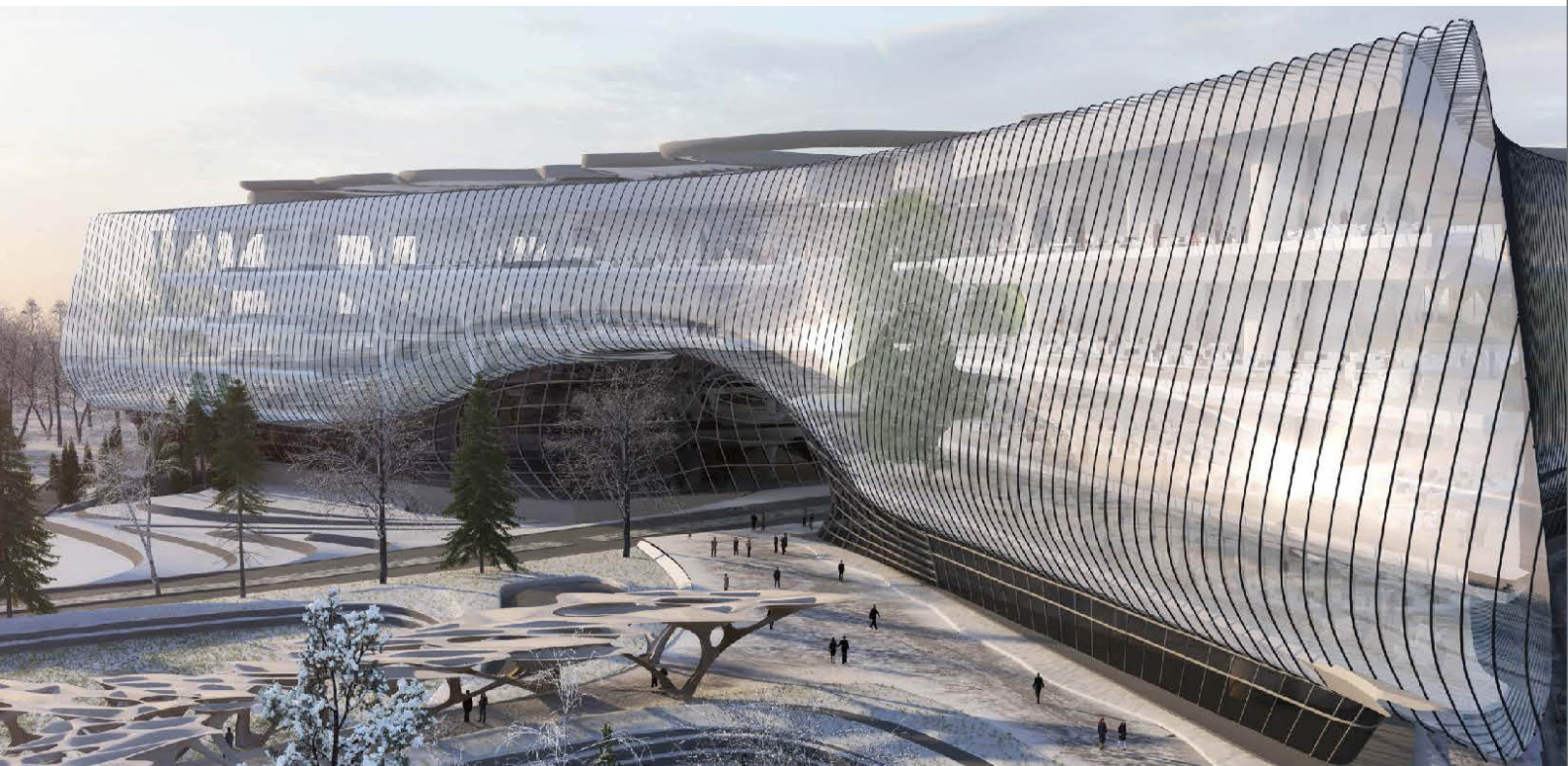
Zaha Hadid Architects –
winner of the international
closed competition for the concept of the
Sberbank PJSC Technopark at the Skolkovo
Innovation Center



The Sberbank Technopark is destined to become an IT innovation driver

German Gref

The CEO and Chairman of the Board of Sberbank, German Gref, has announced the competition winner – Zaha Hadid Architects. Presented at the competition were five concepts, developed by the leading architectural studios: Foster + Partners (Great Britain), Massimiliano Fuksas Architetto (Italy), SPEECH (Russia), Eric Owen Moss Architects (USA), Zaha Hadid Architects (Great Britain). Aside from the standard evaluation criteria, such as technical indicators, feasibility and the functional content of the building, the opinion of the future employees of the new Technopark was also taken into consideration.



” *Zaha Hadid Architects was founded in 1976. Its chief – architect Zaha Hadid – is the first-ever female winner of the Pritzker Prize.*

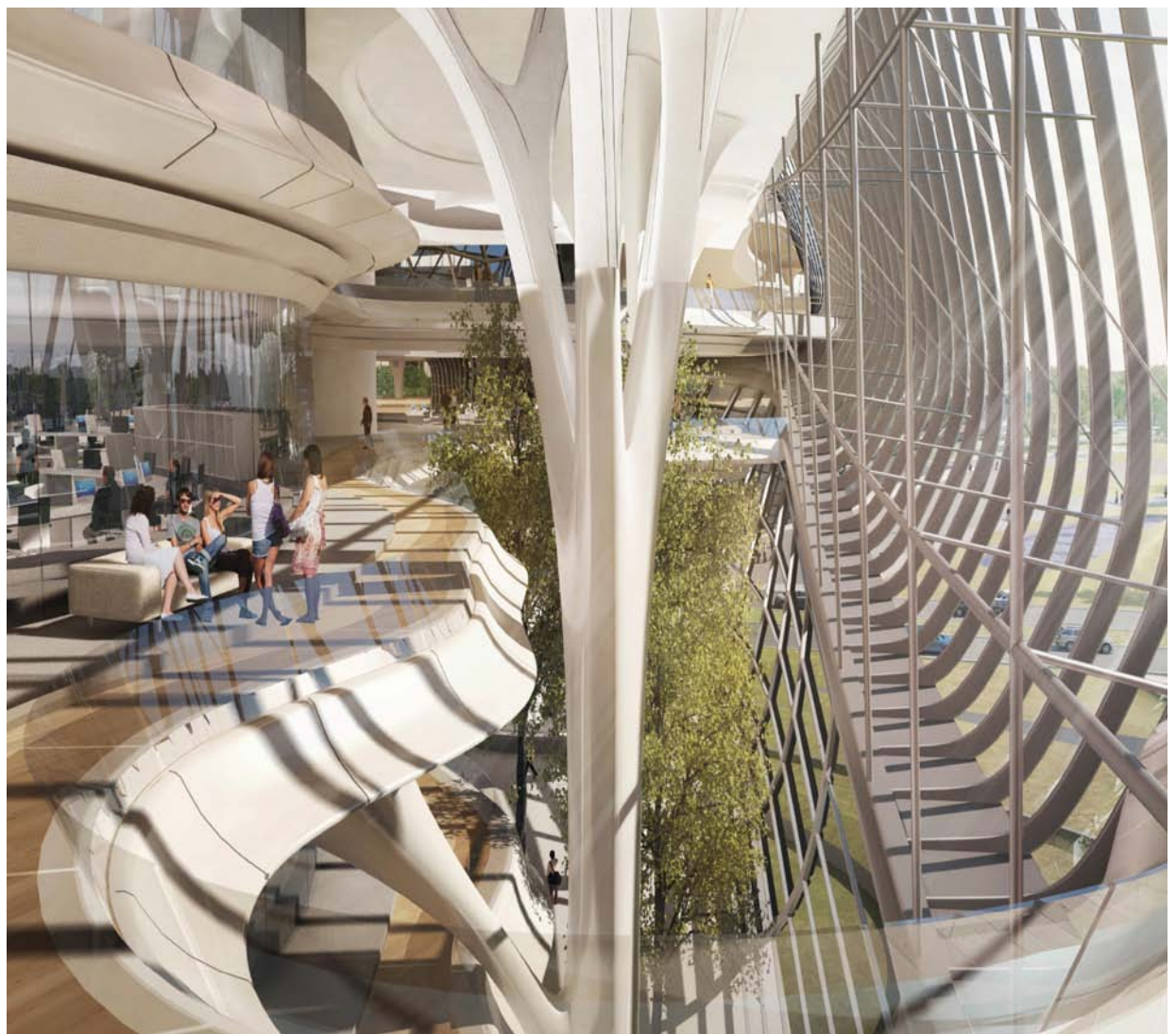
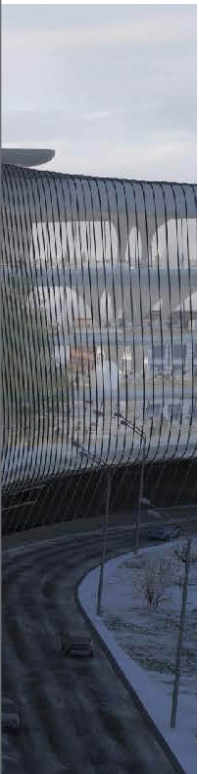
The facility, spanning a total area of 131,505 m², will be located in Skolkovo on a land plot measuring 7.83 hectares, along the southern boundary of the plot, whose fluid contours it mirrors. The vast, glassed-in expanse of the building is shot through with a tunnel in the form of a wide atrium-boulevard, making it reminiscent of an airport terminal. The two-part “central hub” acts as a connecting module, serving simultaneously as a utility, exhibition and front-office block. The building’s architecture is geared towards the most cutting-edge technologies, including heat- and energy-saving advancements. The horizontal and vertical connection between all functional zones has also been meticulously thought out. Particular attention has been paid to transformability and mobility. Alongside the open planning of the main work zones, there are also a number of private spaces: a leisure zone and meeting rooms.

“For us, it’s not just a building,” explained German Gref, “it’s a place where the future of the largest Russian and global bank will be shaped. We wanted the building to underscore the importance of striving

for constant refinement. The new Technopark must create an environment that constantly urges us onwards and upwards, setting a mark so high that it can’t be missed.” Skolkovo will be the new home of Sberbank Technologies and Sberbank CIB, as well as virtually all of the bank’s IT specialists – 10,000-12,000 people in all.

According to Gref, construction of the Sberbank Technopark will start in about a year-and-a-half and take roughly two years to complete. “Design could take at least a year. At that time, when the final product is more-or-less defined, we’ll be able to announce a tender for the general contractor, and that process will also take several months,” said the Sberbank chief.

Jury chair Sergey Kuznetsov emphasized that the competition for the Technopark design turned out to be “the most significant and important event of the year, one that will result in Moscow gaining a truly magnificent facility – an iconic building of international renown.”



Photos: © Zaha Hadid Architects

ARCHITECTURE

HUMANITY IN THE ARCHITECTURE OF THE CITY (SPAIN)

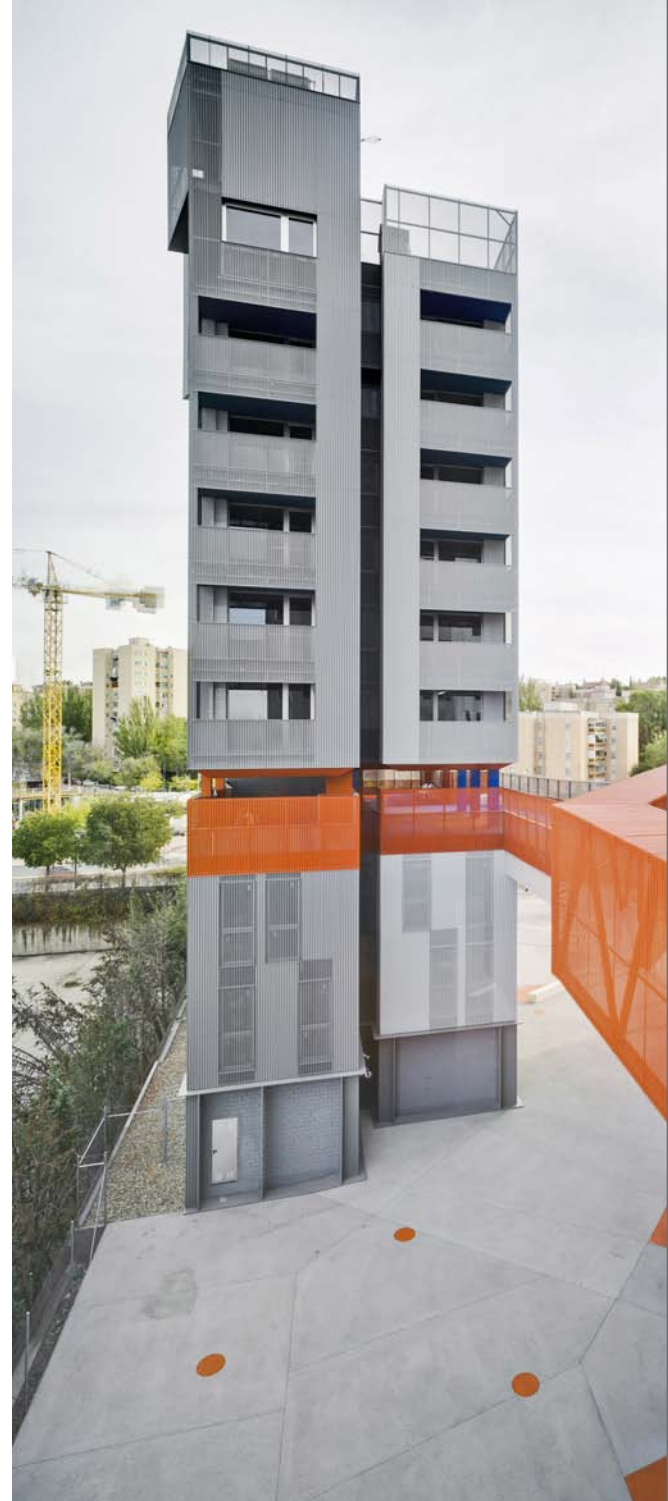


The mixed-use “118” complex in Coslada (a Madrid suburb) represents a step towards solving the problem of a shortage of universal public buildings in Spain. The expansive 20,000 m² of a former industrial zone have not only transformed into a public space, but have also emerged as the standardbearer of a new architectural philosophy of urban comfort. The architectural firm Amann Canovas Maruri has created a space for human comfort in an industrial environment.

The complex consists of four towers, connected by a public space at the second-floor level. The platform, elevated to a height of 10 meters, is divided into different zones highlighted by color-coded accents. From the first floor, the space is connected by an

ARCHITECTURE

” *The project is geared towards young people, and has been created with a view to meeting their expectations. 70% of the apartments are intended for rent, with just 35 being offered for sale.*



elevator and a massive metal staircase painted fluorescent orange.

The public zone is the “heart” of complex “118.” It’s a pleasant spot for relaxing and socializing, which is the latest word in the architecture of the urban space.

The residential portion of the complex consists of small two-bedroom apartments and lofts. The layout of the private zone is designed as an uninterrupted space that can be variously configured with the use of large sliding doors. All of the apartments are opened up by a glassed-in terrace measuring 7 m², suitable for year-round use. The living space is separated from the public zone by an elongated storage complex, and

from corridor noise by technical bays. The complex is made of reinforced-concrete structures, covered in steel sheets that have been painted different shades of grey. All of the buildings have ventilated facades with semi-translucent perforated cladding.

The project marks the evolutionary start of a new, user-friendly urban space. Against the backdrop of an industrial environment, “118” is conducive to basic human interaction, creating a homey, familiar-feeling atmosphere.

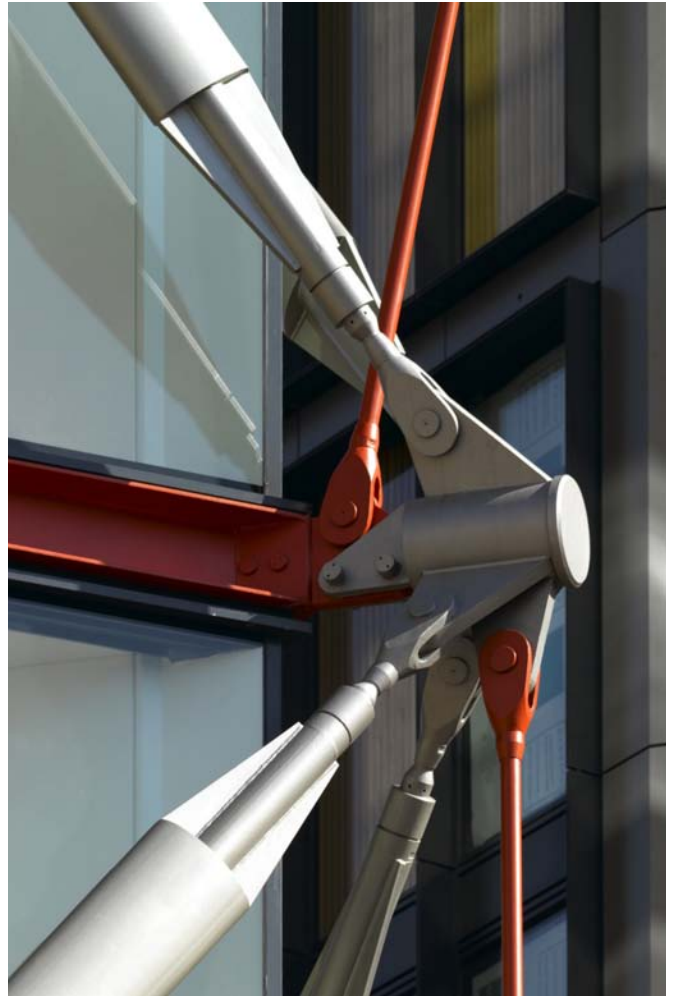


Photos: David Frutos

ARCHITECTURE

FREEDOM MADE OF GLASS AND STEEL (GREAT BRITAIN)





The architectural legacy of London's old industrial district and the founding father of the high-tech style, Richard Rogers, has found its next stage of evolution in the contemporary project NEO Bankside. The four hexagonal towers, built in the heart of the British capital, have formed a modern neighborhood next to the legendary gallery Tate Modern and the River Thames.

The central location forced the project's creators, Rogers Stirk Harbour + Partners, to provide for a public park area around the buildings. Landscape design was handled by the Gillespies Studio, which laid end-to-end green boulevards along the buildings, and created pedestrian routes that intersect the territory from north to south.

The modern facades of NEO Bankside, made of glass and steel, are complemented by wooden panelling and sun-protective latticework. The buildings themselves are designed as hexagrams, whose

ARCHITECTURE



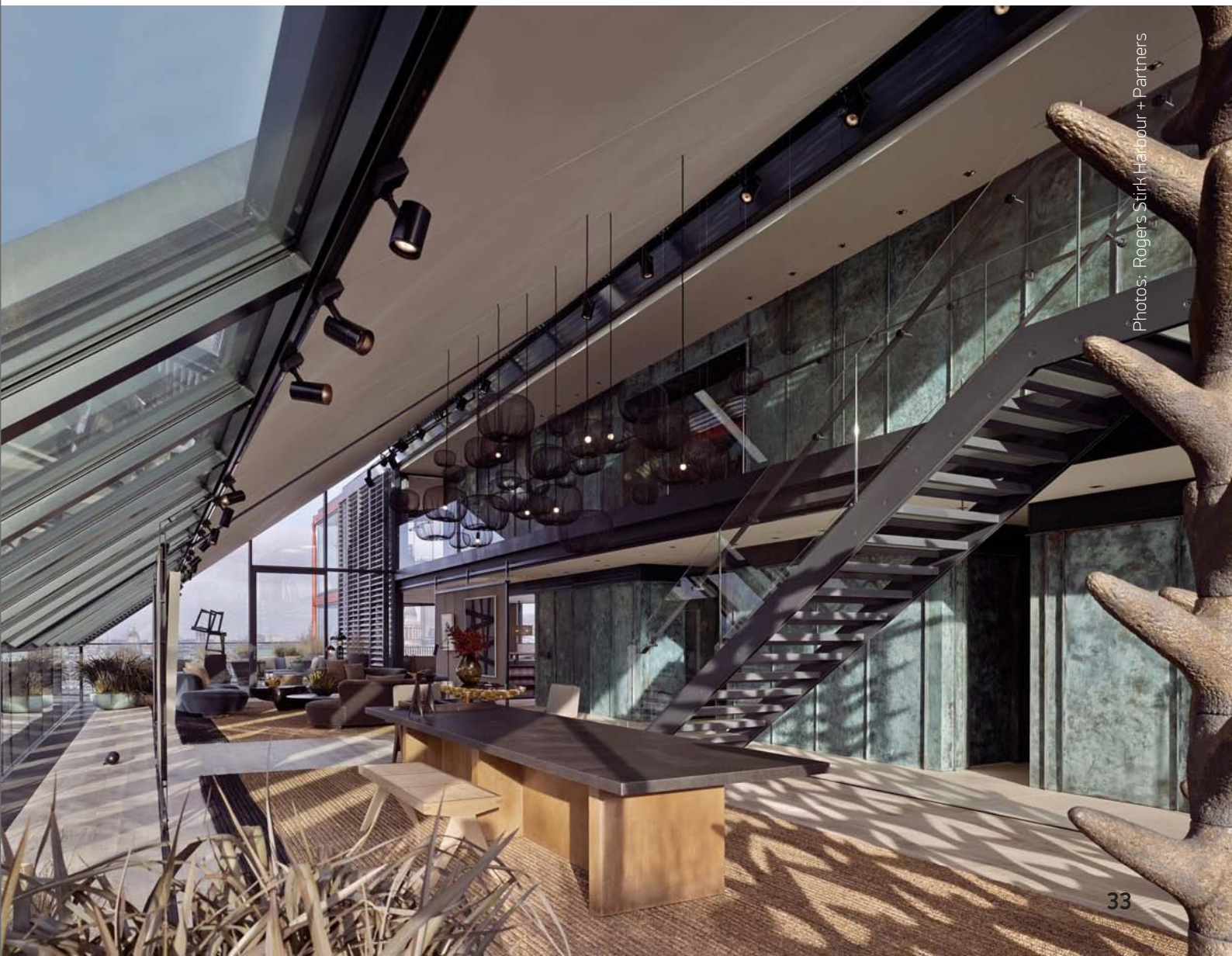
elongated corners make the towers appear less voluminous. The architectural novelty of the design lies in its external steel frame. This bit of ingenuity makes it possible to eliminate interior load-bearing walls, making the layout of the apartments incredibly light and airy as well as variable, filled with a sense of openness. The structural components and pipes, in the best traditions of Rogers's design, are all placed on the outside. Aside from the original exterior, the structure also paints a picture made of diagonal elements that help the complex blend into the overall panorama of the neighborhood. The expanse of the towers also includes elevator shafts, which gives the facades added depth. The checkerboard configuration of the buildings gives them the impression at a distance of a solid wall separating the industrial zone.

The buildings, 12 to 24 stories tall, hold 217 apartments – including premium-class penthouses. The living space is dramatized by panoramic windows that let in the maximum natural light that London can provide. The first floor of each building is entirely

commercial space. The interiors of NEO Bankside were developed by the Reed Design Studio.

The Rogers project is one of the few residential complexes to make it in 2015 onto the short-list for Great Britain's highest architectural award – the Sterling Prize. Just in being nominated, the authors claimed a victory of sorts, setting a record in terms of the number of times being considered for the Prize. Rogers Stirk Harbour + Partners is the only contender to have already won the award twice: in 2006 – for the Barajas Airport in Madrid, and in 2009 – for the Cancer Patient Rehabilitation Center in London.

Today, it can confidently be asserted that the design of Richard Rogers, considered innovative not long ago, has rooted itself firmly in the British capital. Architectural structures with externalized utility systems have gained popularity among users and investors alike, becoming one of London's most compelling tourist attractions.



Photos: Rogers Stirk Harbour + Partners



TREE OF LIFE (AUSTRALIA)



The new Lady Cilento Children's Hospital in Brisbane (Australia) is unique as both an architectural and functional municipal facility.

The architects from Lyons + Conrad Gargett have created a building that harmoniously combines geometric and chromatic variation. The brightly-colored exterior facades include green and purple, mimicking the hues of the flora in the adjacent park zone. In terms of its shape and massive inserts – balconies made of concrete and glass – the building stands apart from the common perception of healthcare facilities. It is also multifunctional,

including one of the world's most cutting-edge diagnostic complexes.

“Design work started with a study of the genealogy and typology of today's modern hospital. We looked at hospitals from the 1980s in order to create a functionally-manageable, medically-centric complex,” says the project director. “It was an opportunity to challenge prevailing stereotypes of healthcare facilities so as to radically rethink the model and methods by which a building can facilitate the development of the city and the community.” The design takes a “salutogenic” approach, including



the design of a strategy supporting the health and wellbeing of patients, as well as such attributes as navigation and communication with the outside world – glimpses of nature – thereby providing a green environment for patients and staff. “The design concept was rooted in the idea of a “tree of life,” and further elaborated on by way of a series of seminars with hospital users and stakeholders.” The varying heights and branching passageways help to unite the different spaces and bring natural light into the hospital building. Two- and three-dimensional art objects are liberally scattered throughout the

complex so as to lift the spirits of visitors and fill the little patients with cheer. The green rooftops on the upper levels are used by patients, family and staff for passive and active recreation, and also form part of the hospital’s rehabilitation program. Here, the tree of life is a symbol of a healthy life.



Photos: Courtesy of Lyons Conrad Gargett

INTERNATIONAL COMPETITIONS

Competitions for architects and designers are interesting for the multitude of ways in which they give participants the chance to make a name for themselves, improve their qualifications and bolster their image.

The international competition **BATIMAT INSIDE** has tallied the results and announced the winners of 2016. The professional jury included: Vera Butko, Anton Nadtochy, Sergey Estrin, Yuri Vissarionov, Maxim Kashin, Svetlana Pisarskaya, Yaroslav Usov.

This year, the nominating categories emphasized small-sized living spaces, the little details of common areas, and the design solutions of bathroom interiors.

All of the winning designs are presented on the exhibition website: www.batimat-rus.com



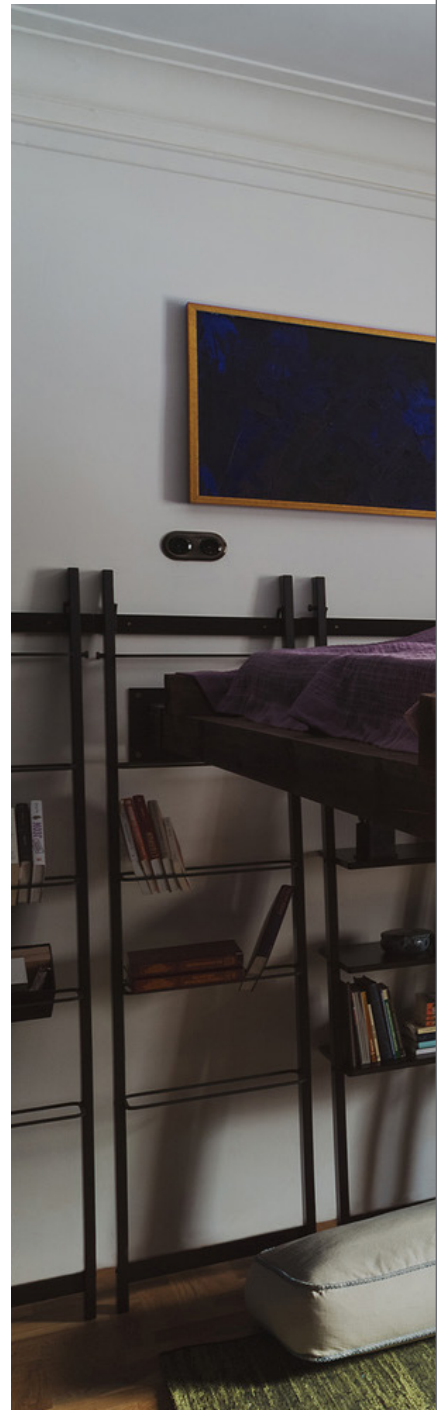


Design “Private interior of a 1928 home”

Designer: Nikita Zhilyakov (Ekaterinburg)

Nomination: “Interior of a small apartment”
in the section “Implemented project”

The winner in the nomination “Interior of a small apartment” was Nikita Zhilyakov with his design “Private interior of a 1928 home.” As the author noted: “The project itself, as well as its implementation, encompassed a new idea in designing and repurposing an outdated space into a modern residence with the aid of new technologies.” The apartment, measuring 56 m², was interesting in terms of the proportions of its laconic layout, equidistant entryway and 3.5-meter-high ceilings, as well as for the beautiful architecture and location of the building.



Renovating the apartment required overhauling all of the structures, ceilings, floors and utilities and dismantling the walls while preserving and restoring the stucco work. From under several layers of spackelling, wallpaper and plastic panelling, the original paint of the walls finally emerged. So as not to ruin the surviving fragments, the electrical work was done on the outside. Opposite the entrance to the apartment is a “self-contained cube,” comprising a combined W/C with a glass wall and a door. The idea of a bath was nixed in favor of a shower stall with a rain-shower head.

The design incorporates numerous customized features. This made it possible to organize a separate household block in the kitchen, a zone for seasonal items and personal closets. The original items made



from wood and metal are complemented by the antiques scattered throughout the apartment. The “spirit of the times” is bolstered by an old buffet, table, chairs, stands and a few mirrors. The work zone in the kitchen is finished in patina-rich metal sheets, secured by rivets.

The zone for reading, stowing books and receiving guests is achieved by raising the bed onto wooden supports. All of the metal elements securing the beams – inserts, corners and brackets – were fabricated according to the project author’s sketches. The apartment is adorned with works by present-day Urals artists, which also helped to underscore the historical past of the property.

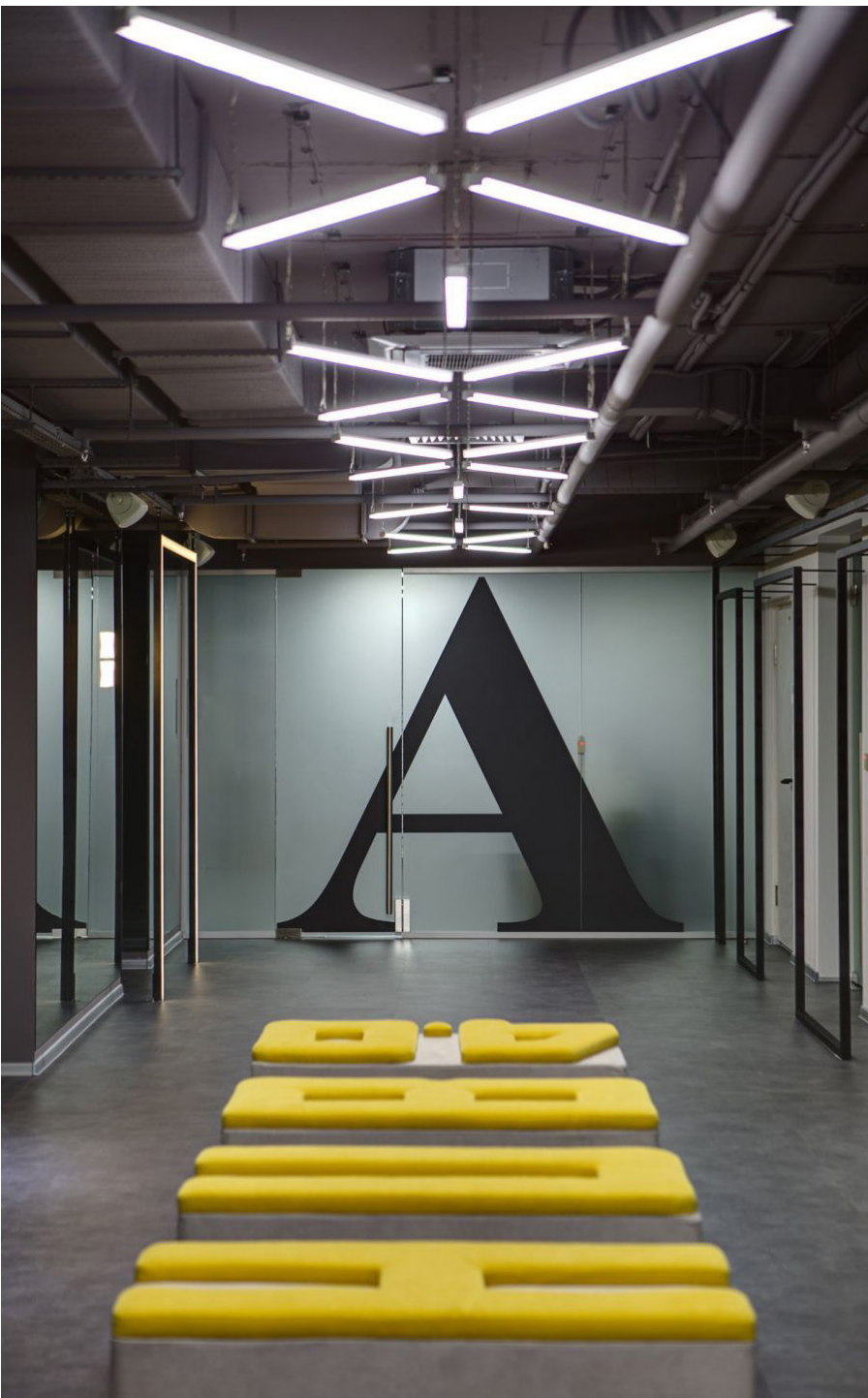
COMPETITIONS & AWARDS



” The masculine “self-contained cube” of a W/C, complete with a rain-shower shower stall, is both laconic and functional

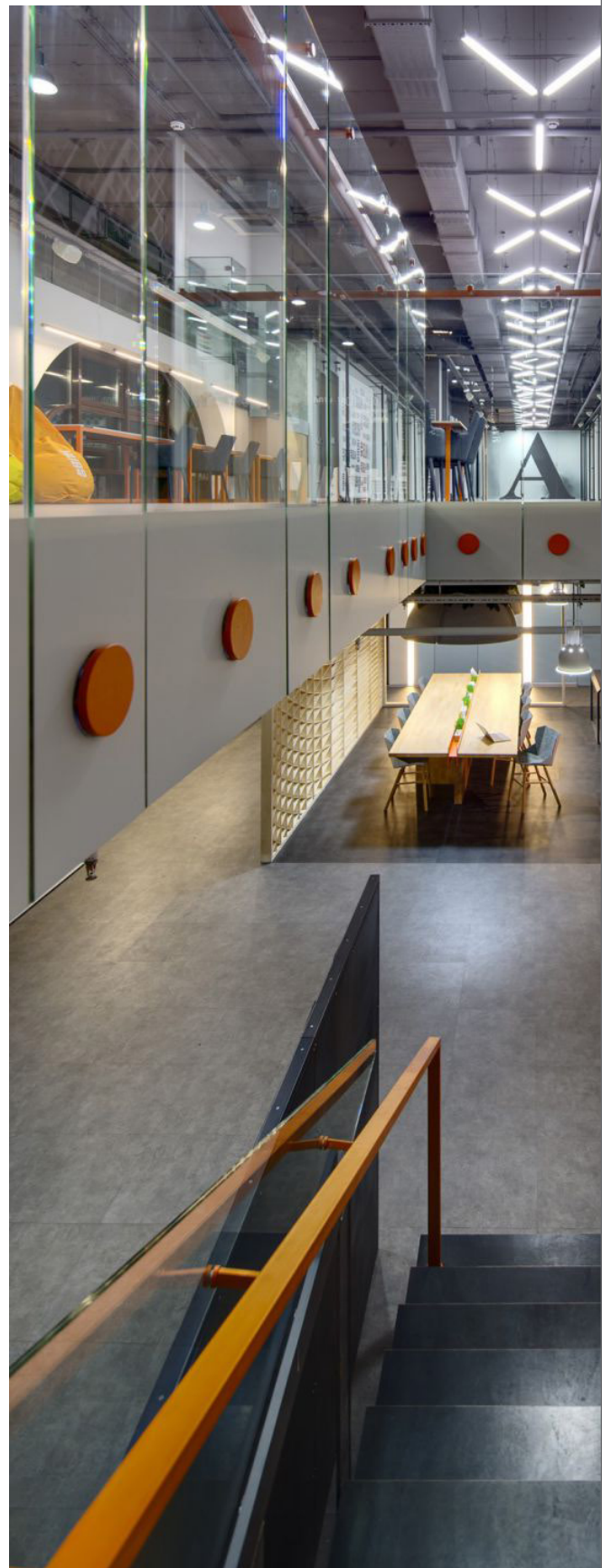


COMPETITIONS & AWARDS



Design HUB 4.0

Authors team: Nika Vorotyntseva,
Tatiana Saulyak, Marina Korak (Kiev)
Nomination: "Common area in details"
in the section "Implemented project"





**Design “Functional bathroom
in a Moscow apartment”**

Architect: Alexei Dunaev (Moscow)

PROJECT 905 Studio

Nomination: “The bathroom – private sanctuary”
in the section “Implemented project”





Design Alice

Designer: Zoya Vorotyntseva (Odessa).
Nomination: "Bold use of prints"



КОНКУРС ПРОЕКТОВ ВНУТРЕННЕГО ПРОСТРАНСТВА

Приглашаем к участию российских и зарубежных архитекторов и дизайнеров!

BATIMAT
RUSSIA

INSIDE
2017

ПРИЕМ ПРОЕКТОВ НА КОНКУРС
с 15 сентября 2016 г. по 15 февраля 2017 г.

НОМИНАЦИИ

- «Безопасный офис»
- «Безопасный отель»
- «Безопасная зона общественного питания»
- «Безопасная SPA-зона»

КОординатор конкурса

Дюпина Наталья

Тел. 8 (495) 380-37-00, 380-12-00

Моб. тел. 8-963-667-8663

expo@ard-center.ru

Официальная страница конкурса:

<http://ardexpert.ru/special/BatimatInside>

УЧРЕДИТЕЛЬ



ОРГАНИЗАТОР

издательский дом
СТРОИТЕЛЬНЫЙ
ЭКСПЕРТ



ИНФОРМАЦИОННЫЕ ПАРТНЕРЫ



SMASH DEBUT OF A REAL INTERIOR

The one-of-a-kind professional competition for architects and designers known as “Real Interior” was held this year within the scope of the exhibitions BATIMAT RUSSIA and MIFS (Moscow International Furniture Show).

It was the first time in the entire history of construction and interior exhibitions that such a sweeping project was staged, bringing together all players in the construction industry – architects, planners, realtors, builders, designers, and fixture manufacturers and suppliers. Competition participants were offered a number of versions of actual apartments in the Mir Mitino (Mitino World) residential complex developed by the construction company GVSU Tsentri and a set array of fixtures and materials.

The “Real Interior” competition envisioned two nominating categories: basic and additional. The winning design project in the basic nomination was a full-scale model interior of a 4-room apartment, “built” in one of the pavilions at the exhibition BATIMAT RUSSIA 2016. The design’s interior and finishings used the actual materials and fixtures appropriate to the setting, as supplied by competition partners: Electrolux, Parra, Roca, Maria Kitchens, Knauf, Inlavka, Ecookna, Manders, Kerama Marazzi, Bioteplo, Applico, Alvero Doors, Kastamonu, Ceramic 3D. The competition attracted





widespread attention among the professional community, while the stand of the 4-room apartment interior was of particular fascination to exhibition visitors.

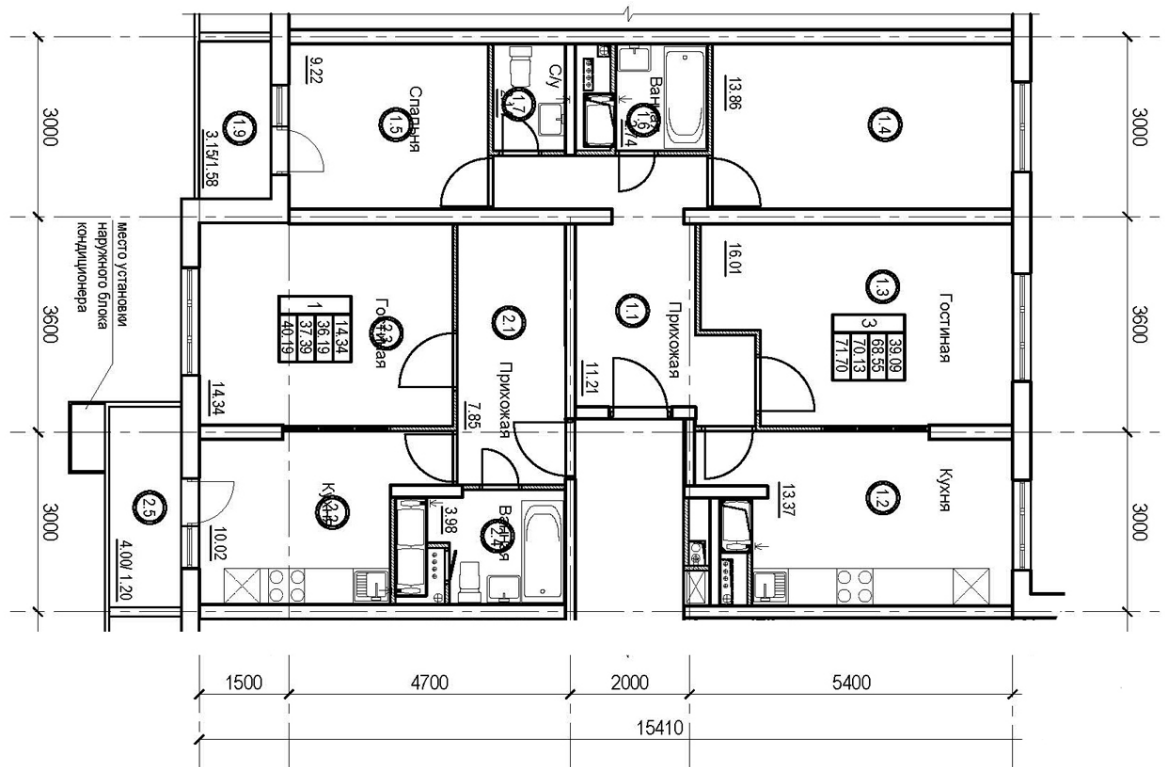
Also noteworthy was the universal system for prefabricated apartment buildings – DOMMOS, which is akin to a mobile erector-set, consisting of industrial components that have been standardized for buildings of varying storey configurations (6-25 floors), with high variability among apartment layouts and a living-space height of 2.65 m.

In the basic nomination “Design for combining a 3-room and 1-room apartment in a DOMMOS prefabricated building,” the top prize went to Elena Pegasova. Her project, called “In the right proportions,” was implemented and presented at the exhibition.

According to the competition terms, the apartment is intended as the home for a family of four – two parents and two children. The participant was free to decide on the gender and age of the children. In

COMPETITIONS & AWARDS

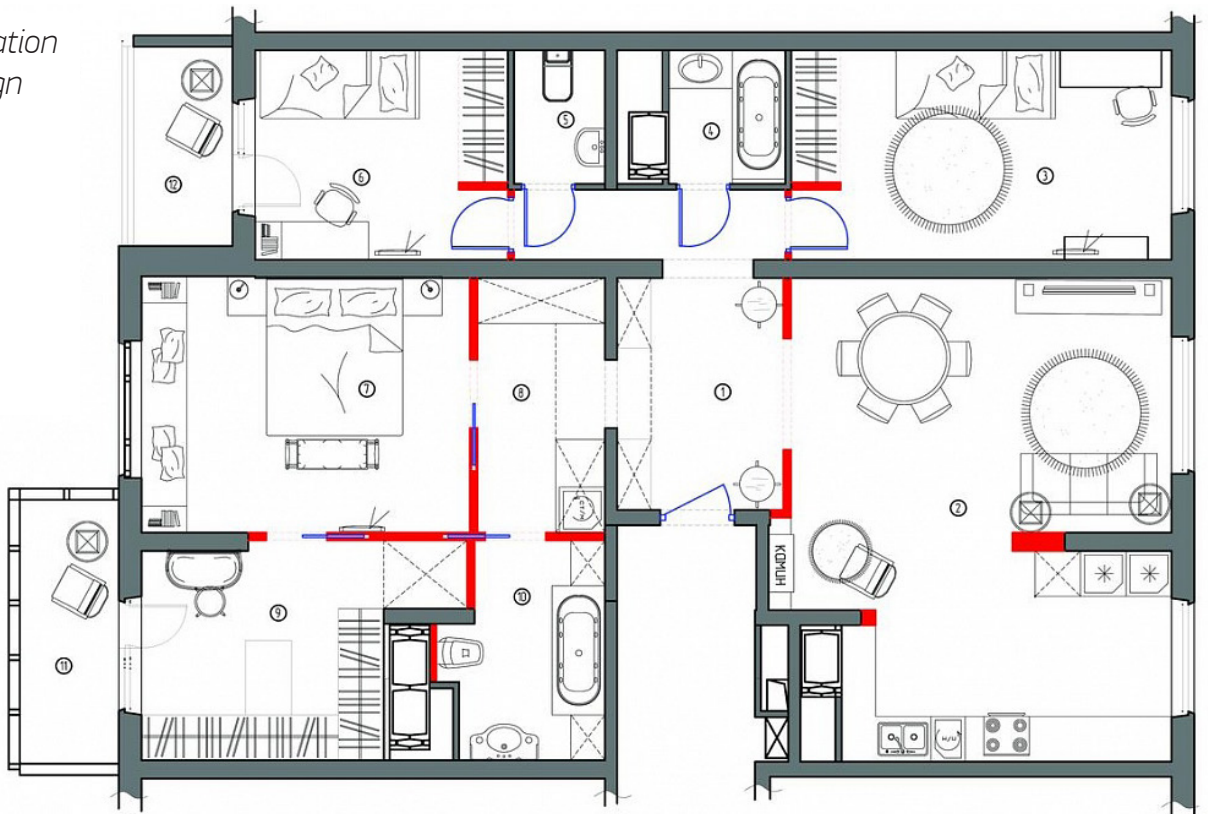
Design assignment



SPACE-PLANNING SOLUTION

- | | | |
|--------------------------|---------------------|-------------------|
| 1. Hall | 5. W/C | 9. Closet |
| 2. Living room - kitchen | 6. Boy's room | 10. Bathroom Nº 2 |
| 3. Girl's bedroom | 7. Master bedroom | 11. Balcony Nº 1 |
| 4. Bathroom Nº 1 | 8. Utility corridor | 12. Balcony Nº 2 |

Reconfiguration of the design





this particular project – the kids were of the opposite sex, aged 14 and 15. Each has their own interests and preferences, which were taken into consideration in designing their rooms.

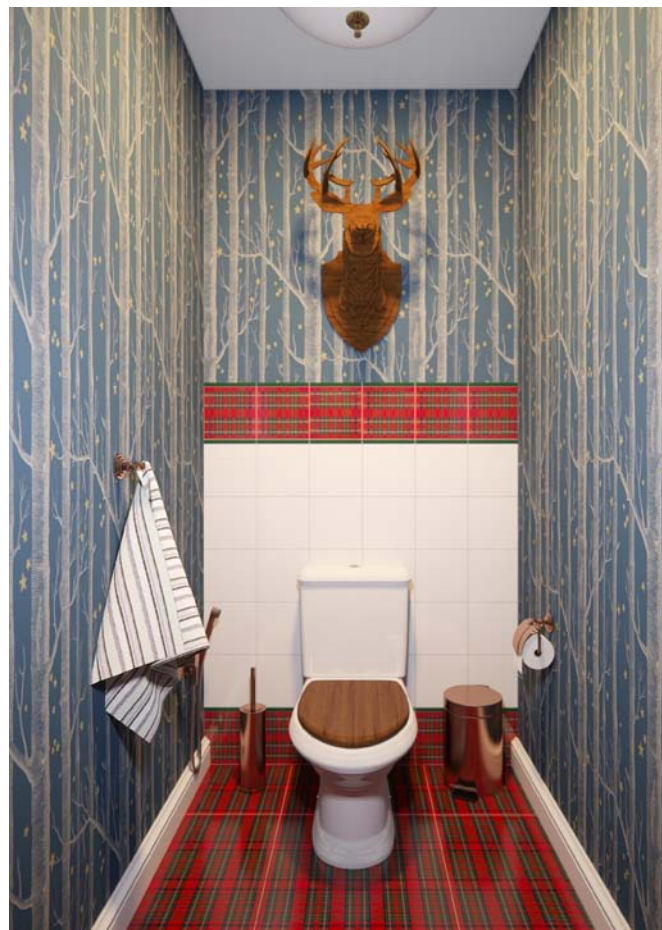
The interior style of the entire apartment reveals elements of iconic art deco, refined Provence, and restrained British decor. As a result, the kitchen, living room and dining room have merged into a single





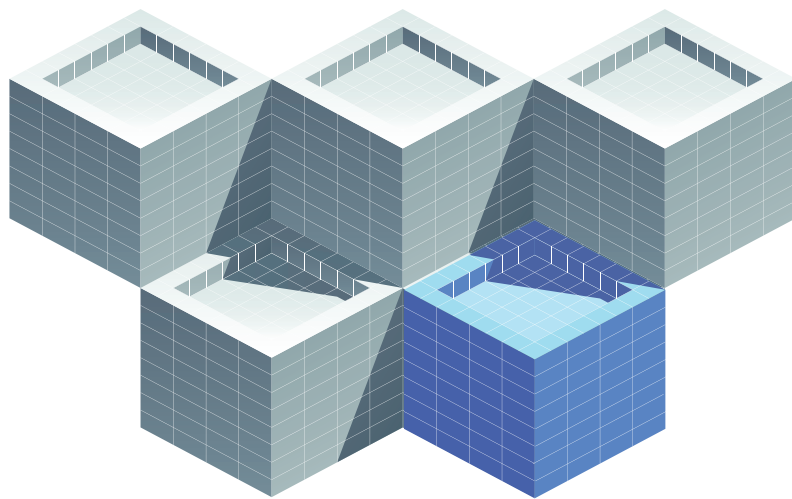
space. The apartment features three W/C, two of which are full-fledged bathrooms. There is a small laundry nook with convenient storage cabinets. The master bedroom comes equipped with an ensuite and a walk-in closet. The balconies to the apartment have not been connected; instead, they have been left as cozy spots for relaxation.

COMPETITIONS & AWARDS



In the additional nominating categories:
design for a 1-room, 2-room or 3-room apartment
– the jury was unable to settle on a clear winner,
opting instead to award three third prizes, which
were presented to: Evgenia Zipunyako, Olga
Savchenko and Yulia Agzamova.

All competition designs, with a detailed description
of specifications, are available on the platform “Star
of Design.”
www.starofdesign.ru



I ВСЕРОССИЙСКИЙ КОНКУРС BIM-ТЕХНОЛОГИИ 2016

Приглашаем к участию проектные, девелоперские, строительные организации, студентов, а также специалистов из стран СНГ и дальнего зарубежья

ПРИЕМ КОНКУРСНЫХ РАБОТ – ДО 15 ДЕКАБРЯ 2016

НОМИНАЦИИ КОНКУРСА:

Технологии информационного моделирования в проектировании объектов недвижимости

Технологии информационного моделирования в строительстве объектов недвижимости

Технологии информационного моделирования в управлении инвестиционно-строительными проектами

Технологии информационного моделирования на стадии эксплуатации объекта недвижимости

СПЕЦИАЛЬНЫЕ НОМИНАЦИИ:

Студенческие работы с использованием BIM-технологий

BIM-технологии при работе с памятниками истории и архитектуры

Лучшая программная разработка в области BIM-технологий

СПЕЦПРИЗ: Самая яркая BIM-ИДЕЯ года

КОНТАКТЫ

Дюпина Наталья, expo@ard-center.ru

Тел. 8 (495) 380-37-00, Моб. тел. 8-963-667-8663

Официальная страница конкурса: <http://ardexpert.ru/special/konkursBIM>

ОРГАНИЗАТОР



СТРОИТЕЛЬНЫЙ
ЭКСПЕРТ

ПРИ УЧАСТИИ

ОБЩЕРОССИЙСКАЯ
ОБЩЕСТВЕННАЯ
ОРГАНИЗАЦИЯ **ДЕЛОВАЯ
РОССИЯ**

ПРИ ПОДДЕРЖКЕ



МИНИСТР
РОССИИ



СОЮЗ
МОСКОВСКИХ
АРХИТЕКТОРОВ

ГЛАВНОЕ
УПРАВЛЕНИЕ
РОССИЙСКОЙ ГИЛЬДИИ
УПРАВЛЯЮЩИХ И ДЕВЕЛОПЕРОВ



100+
FORUM
RUSSIA

ЖУРНАЛ
ТЕХНОЛОГИИ
СТРОИТЕЛЬСТВА

качественная
АРХИТЕКТУРА

ARCHI .RU

BATIMAT .RUSSIA

BOMC
ВЕД О РАБОТ СТРОИТЕЛЬСТВА

Ваш Дом.RU

НЕДВИЖИМОСТЬ
& ЦЕНЫ



СОВРЕМЕННЫЙ
DOM

KNOW
HOUSE

ТОЧКА ОПОРЫ
www.TO-OPORA.RU

MasterproFF

1RRE.RU
Russian Real Estate

Парадный
квартал

интерфакс
ИНТЕРФАКС
НЕДВИЖИМОСТЬ



TATRE.RU
СЕРВЕР НЕДВИЖИМОСТИ КАЗАНИ И РТ

МХ
МЕХАНИЗАЦИЯ
СТРОИТЕЛЬСТВА
НАЦИОНАЛЬНО-РЕСПУБЛИКАНСКОЕ
УПРАВЛЕНИЕ

ТРАНСПОРТНОЕ
СТРОИТЕЛЬСТВО
ЖУРНАЛ

OF A FARMHOUSE IN THE STYLE OF ART NOUVEAU (AUSTRALIA)

The architectural renovation by Canny Architecture transformed a traditional farmhouse in Flinders (FlindersHouse) into stylish suites. The modern farm is located not far from Melbourne.





INTERIOR

” The “cold” colors and materials neutralize the active sun typical of the local climate, maintaining the optimal human balance.



It's a bungalow with a traditional double-pitch roof, finished on the outside with dark-grey metal panelling. Glass walls let the sunlight in, minimizing lighting costs. Visible through the “reclaimed” doors that lead into the house is its inside space, finished in muted tones. The design of the interior is a composition of different kinds of finishings, materials and textures.

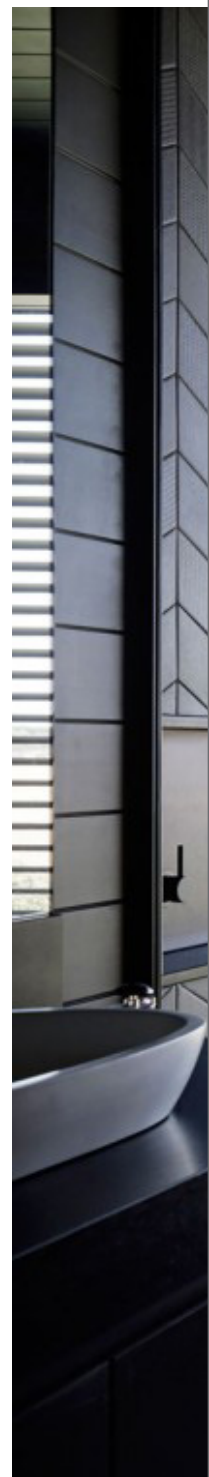
The dark finishing of the living room provides a striking contrast for the white furniture upholstery and fireplace that extends up to the ceiling. The window-seats tucked into the contiguous zone add a note of coziness to the already-warm atmosphere. The open layout provides a smooth transition from the living room into the kitchen and dining room, from



whence the exit leads to an adjoining terrace. The glass sliding door opens into the garden, connecting the interior space with the rolling hills of the farm that disappear into the horizon. The central element of the kitchen is a massive island, made of polished natural stone. The walls are covered in built-in cupboards, where the traditional metal knobs have been swapped out for leather straps. The interior is capped off by ceramic flooring.

The home office features an entire wall of cabinets and open shelving for books and accessories. The interior's finishing touch is an unusual wooden desk and leather chairs. Particularly spacious is the foyer, where the welcoming seating adds a note of comfort to the setting. The home also features a cloakroom. The master bedroom, with its glass walls,

INTERIOR





Photos: Canny Architecture

is discreetly “enveloped” in sheers. They also protect the homeowners from excessive sunlight. The master bath is finished in appliquéd ceramic tile. The variation among finishing tones brings the interior to life. The standalone tub “looks” onto the garden through the panoramic window. The room is fitted with a rain-shower shower stall, which takes up a significant amount of space.

The design by Canny Architecture elevates the humble farmhouse into the same league as the best examples of Art Nouveau style. The designers did their best to use a wide array of materials: woods, ceramic, stone, metal, leather, textiles – all of these elements have their own pride of place and complement each other, creating a unified whole.

INTERIOR

DESIGN OF A BMW SHOWROOM

Glass and metal are used to embody the BMW brand's prestige. The sheer scale of the showroom projects the country's vast expanse and its ambition to become the legislator of technological progress.

The new BMW showroom in Chongqing (China) is the fifth design project by the architectural firm Crossboundaries. From the 20,000 m² total area, a public zone was carved out measuring 4,800 m², used to house a cafe, movie theater and playground. The sales and customer-relations department, vehicle display-window and office all transition seamlessly into one another, inspiring the creative atmosphere for which the brand is known. Space and function flow from one into the other.

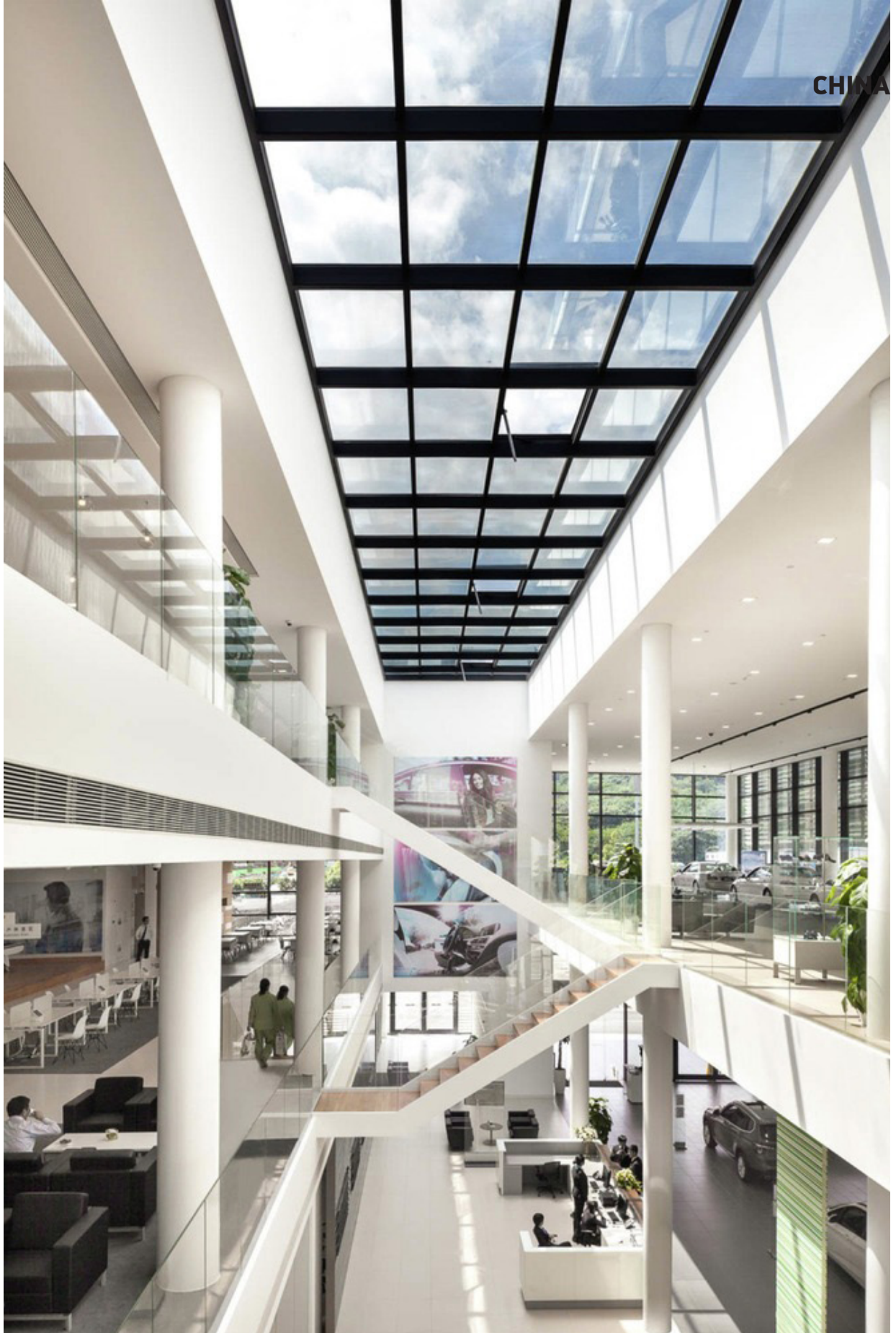




INTERIOR

Patterns are created by the outlines of the vehicle protectors. The function of walls is performed by panelling reminiscent of an automobile grill which, with its metal planks, reveals more of the space and beckons visitors to the display stands. The various elements of the interior also play different roles, becoming a tabletop, drawer unit or shelving. Wooden shelves with white inserts and openings provide a visual connection between the different spaces, where functions are clearly defined without impeding on openness. Showcase areas are “collapsed,” focusing attention on the products, while the special ceiling lights intensify the effect. The two floors of the mezzanine are intended for bookings of special meetings and VIP presentations.





Photos: www.archdaily.com

The visual identity of BMW dealership showrooms is created by windows with branded materials and colors. The polished metallic and high-gloss surfaces – the industrial corporate image of BMW. The positioning of the two main staircases make it possible to completely open up the space, thereby reinforcing visitors' first impression of the sheer scale of the BMW brand.

AWARD



reddot award

International awards, which are handed out every year, encourage the development of industrial design and the integration of innovative advancements into mass production. One of the world's most prestigious prizes, the Reddot Award, is presented for outstanding quality, innovative form and functionality.

This year, Schüco International (Germany) was singled out for the **International Reddot Award** in the nominating category “Honorary Mention” and the **iF Design Gold Award** for its unique development – the **Schüco Parametric System**. The use of three-dimensional geometry in designing a building facade gives unlimited freedom to the architect’s creativity, making it possible to achieve the boldest expectations of clients and investors alike.

In unveiling the Schüco Parametric System, Schüco was the first to enable the free-form geometric design of 3D facades in the form of economical mass-produced system solutions that crowd out the more expensive, customized solutions. The Schüco Parametric System is based on combining the modular principle of Schüco systems with a full transition to digital 3D processes in the development and styling of Schüco products. System advantages:

Design

- Individualized three-dimensional architectural solutions – thanks to its universal library of structural elements, there are no restrictions in terms of size
- Insulation and shielding, optimization of daylight, the capability of creating a fantastic external appearance, and transparency – all of these can be used as the active factors in design
- An elegant facade with structural glass or an all-glass facade with embossed interfaces for single or double glazing
- Using even more advanced design tools opens up additional opportunities for creating new parametric forms
- Element dimensions (W x H): maximum 1,500 mm x 4,000 mm

Energy

- Aluminium facade system with outstanding thermal-insulating indicators with UF values of up to $0.4 \text{ W}/(\text{m}^2\text{K})$
- Schüco 3D design programs: combination of parametric components via available means, such as building automation
- Elements can be translucent or opaque for shading purposes – plus the option of additional functions, such as light distribution and the generation of energy through the use of solar power

Automation

- Integration with existing Schüco functional solutions without system changes, such as opening ventilation panels, decentralized aeration elements and integrated photovoltaic modules (BIPV)



AWARD



1. Moment sink; manufacturer: ZeVa GmbH (Germany). The round shape creates a sense of equilibrium and stability. Stripped of any superfluous design elements, the sink inspires a feeling of simplicity, while the compact form makes it suitable for smaller bathrooms.

2. NAVISH kitchen faucet; manufacturer: LIXIL Corporation (Japan), designer: Yuichiro Komatsu. This faucet solves the problem of kitchen hygiene thanks to its built-in sensor-based no-contact option. The light indicator displays when the filter cartridge needs to be changed.

3. Nature sink; manufacturer: AMA Design by Materfut S.A. (Portugal). This pedestal sink combines two materials – Corian, which boasts antibacterial properties and is easy to clean, and moisture-resistant natural cork. The pedestal is extremely lightweight and provides good thermal and sound insulation.

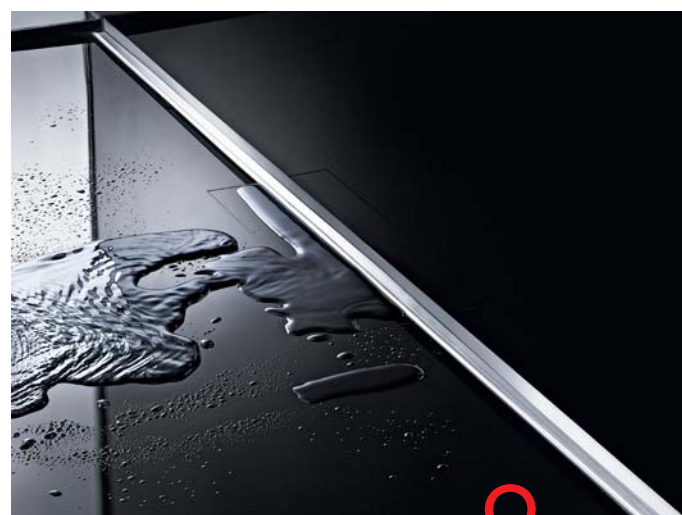
4. RenoDeco wall panels; manufacturer: HSK Duschkabinenbau KG (Germany). Made especially for damp, high-humidity rooms, these 3mm-thick aluminium composite panels are styled to look like stone, wood or metal. Scratch-resistant, UV-resistant, and easy to clean.

5. Shower toilet SensoWash Slim; manufacturer: Duravit AG (Germany). This version combines a toilet with a shower. Simplicity of use and functionality make it a convenient solution. The intensity and positioning of the nozzle, as well as the temperature of the water, are set using lighted icons or remote control.



6. Fern kitchen faucet; manufacturer: Damixa (Denmark), design: Schmelling industriel. This kitchen faucet cuts water consumption by 40–50%. The aerator mixes air in with the water flow, thereby reducing consumption to 6 liters, which is sufficient for washing. The taps can be positioned in front, alongside or behind the faucet.





7. Advantix Vario wall drain; manufacturer: Viega (Germany), design: ARTEFAKT. Thanks to its low-profile installation depth (25 mm), the drainage system can be installed without damaging the surrounding tilework. The flooring need not be sloped. Slit grating is made from stainless steel, with a length of 300 and 1200 mm. The drain fitting is self-cleaning.

8. CeraWall P drain system; manufacturer: Dallmer (Germany). The system is installed directly in the wall yet remains virtually invisible. It is a functional mix of drainage and a hidden channel, integrated on an incline. Easy access to the drainage zone allows for quick cleaning.

9



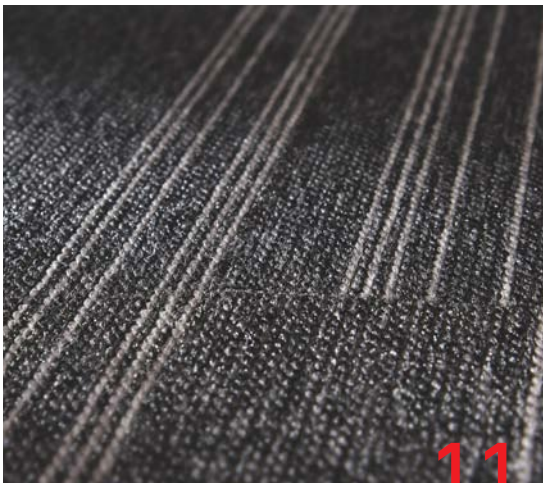
9. Facades for kitchen cabinetry zeyko Metal-X²; manufacturer: zeyko Möbelwerk (Germany). In order to fabricate this structured surface, natural metal is molded, pressed and applied by hand. Polished metallic surfaces contrast with matte sections, creating the effect of depth.

10



10. MUTO system; manufacturer: Dorma Deutschland GmbH (Germany). This multi-functional sliding-door system is simple to both install and use. The system includes a concealed locking feature, which can be operated by remote control or wall switch.

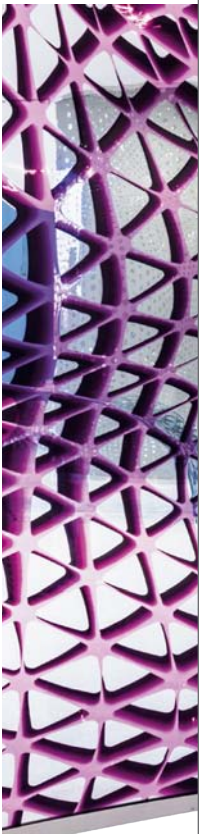
11. Interface Microsfera carpet tiles; manufacturer: Interface (Netherlands). The tiles are made of 100% recycled yarn and manufactured with the use of innovative modular thermonuclear-fusion technology. The resulting product has a low content of airborne organic compounds – a guarantee of healthy indoor air. The narrow templates of the tile (100 x 25 cm) allow for material savings during installation.



11



12





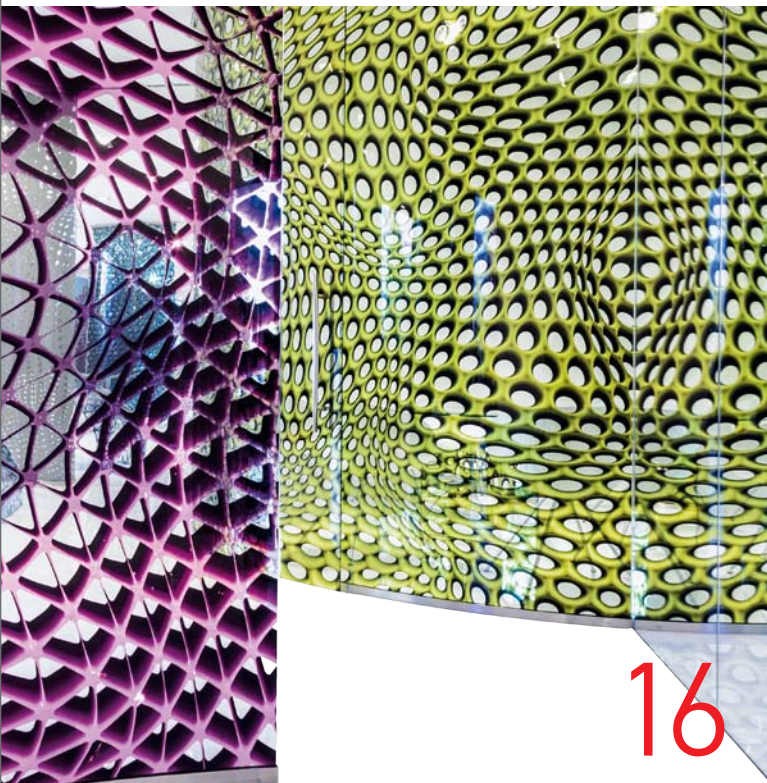
12. Space 63701 entrance door; manufacturer: KeraTür, design: Julian Kemming (Germany). The door (220 mm) is completely covered in glass on one side, and blends seamlessly into the porch area of the house. On the outside, it's finished in functionally-black anodized aluminium. The door also features a bell, a lock unit and mailbox. The inside part of the door is made of oak.

13. SGG Master-Soft glass; manufacturer: Saint-Gobain Glass (Poland).

This patterned glass is of exceptionally-high quality. The surface features 1mm-thick textured frosting. The texture is achieved in the casting process, which is then followed by rolling. The glass provides a high degree of intimacy, while still allowing in sufficient light.

14. LEO Smartkey automated keys; manufacturer: Keyos GmbH (Germany). This automated key-holder can store up to six keys. Each is given its own button number with a backlight. The keys are adapted in such a way that the smartkey technology can be used without the need to replace the doors.

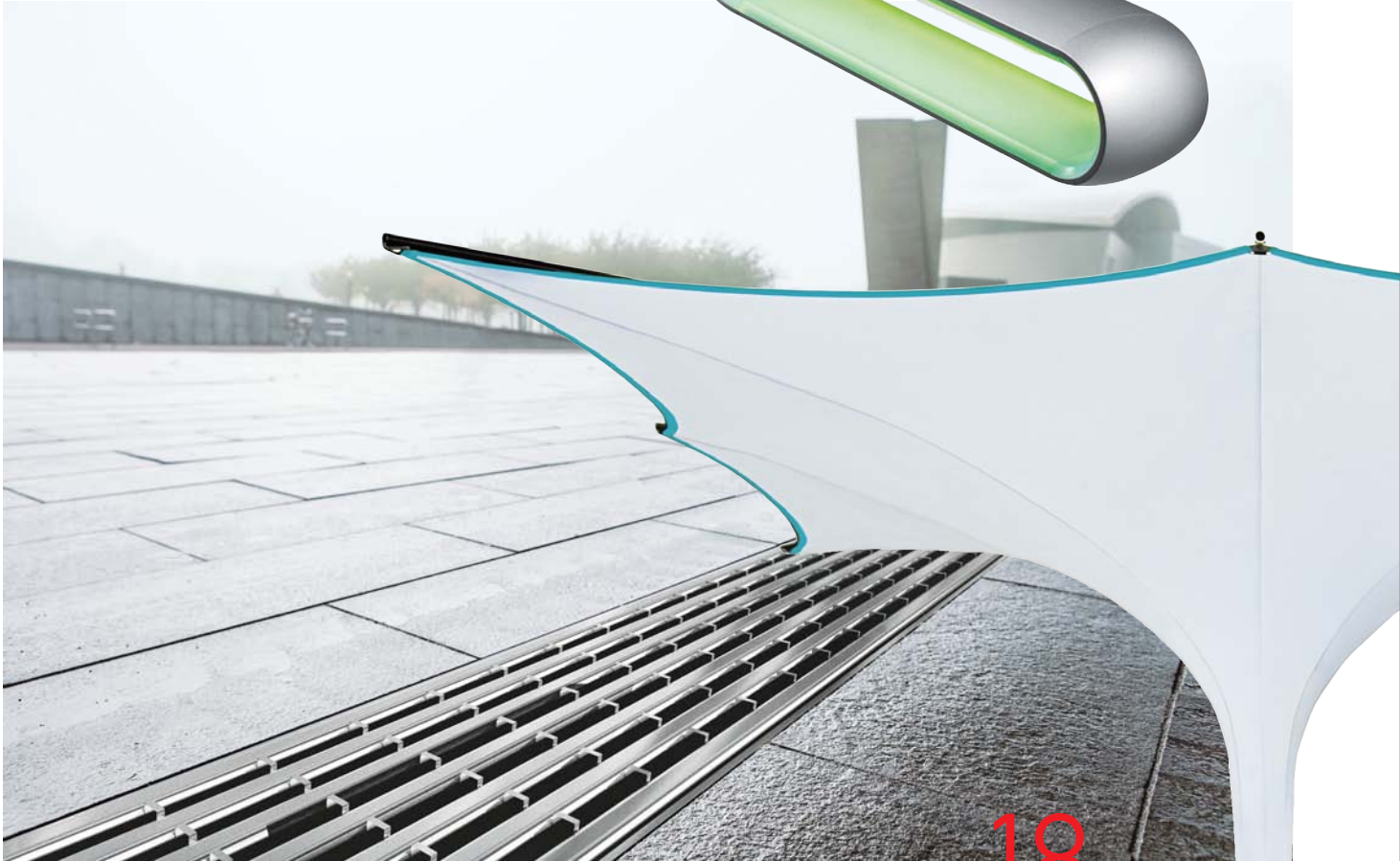
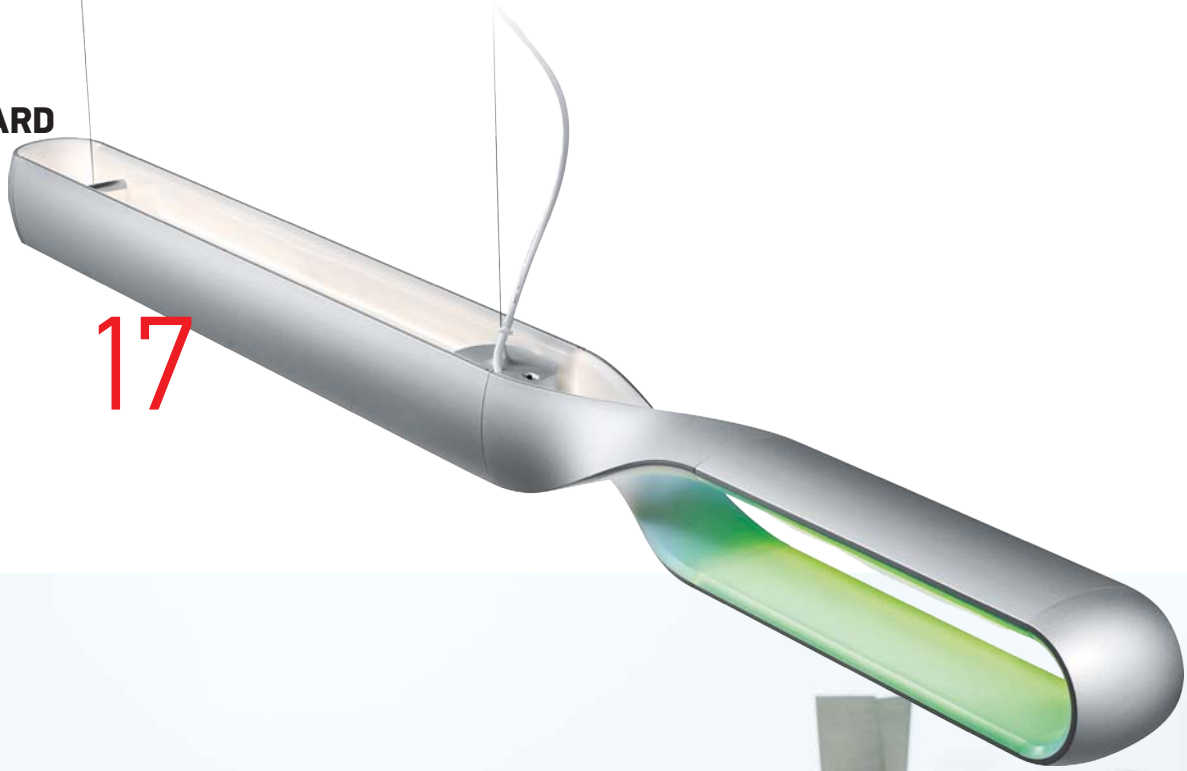
15. Carp decorative material; manufacturer: Jessica Owusu Boakye (Germany). The material is based on natural components. It is made entirely of citrus, making it 100% biodegradable. The surface is characterized by a marble-like finish, which can be semi-translucent or opaque depending on its thickness.



16. Hybrid Collection glass with 3D pattern; manufacturer: Casali (Italy), design: Massive Design Sp. z o.o (Poland). This finishing concept creates color-and-light effects on the glass in the form of three-dimensional artistic shapes. The design is intended for the decoration of large surfaces (partitions, doors, cabinetry).

AWARD

17



18

17. Infinito LED hanging light fixture; manufacturer: Qisda Corporation, design: BenQ Lifestyle Design Center (Taiwan). Fashioned in the symbol for infinity, the bigger loop emits a warm white light for reading, and the smaller – colored lighting effects. The integrated control sensors regulate the brightness and color of the light.

18. ACO Drainlock linear grating; manufacturer: ACO Severin Ahlmann (Germany). The uninterrupted profile of the drainage system features a U-shaped form, non-slip structure and the durability of stainless steel. Slots with integrated heelguard have a width of 8 mm, so shoes with narrow heels don't get stuck.

19. IPOMEA simplex sunshade; manufacturer: Ipomea, design: Studio MSB UG (Germany). The system consists of the primary base – a fabric umbrella, with embedded light and sound modules. The high-tech materials make the umbrella lightweight yet stable in terms of its structure. The umbrella features a central water drain.

20. ViVAA biodynamic light fixture; manufacturer: Derungs Licht AG (Switzerland), design: Zeug Design GmbH (Austria). The light imitates the 24-hr cycle of sunlight. The cold tones in the morning have an energizing effect, while the warm tones emitted by the light after noon get the body ready for a restful sleep. The LED light features antiglare technology.

19





21. Linno Crystal LED lamps; manufacturer: Linno (South Korea). This LED lamp with acrylic dissipator makes it possible to adjust brightness and set up to 16 mln different shades. The lamp is operated by remote control or via an integrated system that controls several lamps.

22. auroFLOW solar station; manufacturer: Vaillant (Germany). Premium quality, innovative components, energy savings, high-efficiency pump – the performance characteristics of a solar station with reduced power consumption. The casing is made of “green” materials.

23. RELAZZO decking; manufacturer: REHAU (Austria). The terrace decking boasts a high degree of fade-resistance and the look of natural wood. The authentic look of the material is achieved through the use of deep brushing and three colors – Terra, Tasso and Pino.

24. Joe LED light fixture; manufacturer: Linea Light Group (Italy). The LED light for outdoor lighting is available in three different heights. The light-beams are directed towards the ground, providing pedestrians and drivers with a convenient reference point. The optical block is enclosed in a frame made of extruded aluminium with a polyester powder coating.

AWARD



25. Conveyor systems; manufacturer: Avancon SA, design: D'ArteCon sagl (Switzerland). This roller-and-belt transporter is divided into separate sections that can be operated independently of one another. The decentralized control system is supported by an independently-operating fieldbus. All drives and control elements are integrated into an aluminium profile frame. The system can be assembled and installed without the use of tools.

26. SLB130 valve; manufacturer: ESBE AB, design: Per Liljeqvist Design AB (Switzerland). The Superflow valve is based on an innovative platform, which makes it easily adjustable to suit the client's needs. Despite its compact dimensions, the valve boasts unique flow properties. The amount of flow is twice that of regular valves, without sacrificing control. The integrated drive is equipped with smart functions. The valve is reliable, safe and adheres to high quality standards.

27. QMC 21 screwdriver; manufacturer: Atlas Copco Industrial Technique AB (Switzerland). Smart screwdriver for working with ultra-low torque, such as the assembly of micro-screws in electronic components. Thanks to its design and engineering materials, the tool is lightweight yet highly efficient. The screwdriver even detects assembly errors such as overtightened screws.



iF design award

– the internationally-recognized seal of quality. Products that have won this award are among the most beautifully-designed products in the world.

28. EY75A7 and EZ75A7 rechargeable drills; manufacturer: Panasonic (Japan). Ultra-compact – 117.8 mm. The new speed mode reduces the risk of thread damage during drilling thanks to the automatic switching of rotation speed from high to low. Uses 14.4 V and 18 V rechargeable batteries.

29. This year, a total of six new products by **Hilti** have garnered awards: rotating laser leveller PR 30-HVS, air hammer, rechargeable drill and impact wrench, powder-activated stud gun and a tool that simultaneously prepares the hole and lays the anchor.

30. AP60-2 power-tool; manufacturer: Intercable, design: MM-Design (Italy). The tool is intended for crimping clamps and sockets made of aluminium and copper, as well as for securing aluminium cables up to 300 mm. Comes with built-in rechargeable battery and backlight. Has a variable speed for precision in crimp positioning, which simplifies work.



30

International design award

Innovation by Design. People's needs change with each passing year. Today, a great product is not only a bestseller, but also the best in innovation and design.

31. Toolkit; performance and design: Leatherman Tool Group (Switzerland). This bracelet made of stainless steel is really a Swiss army knife for today's man. Hidden inside are 29 tools for different purposes, from a screwdriver to a bottle-opener.



31

AWARD



INTERNATIONAL GOOD DESIGN AWARDS

The contemporary presenters of the Good Design Awards – the Chicago Museum of Architecture and Design and the European Center for Art, Architecture, Design and Urban Planning. The award is intended to foster a deeper understanding on the part of planners of the flexibility of the art of design and the needs of today's individual – as well as to popularize progressive ideas about design and architecture.

The award is the world's oldest, having been conferred upon more than 40,000 contenders since its founding (in 1950). One of the conditions of participation – all products and architectural designs must have been developed for manufacturing purposes and in production for at least 2 years prior to the start of the competition.



1. Mixed Message carpeting; designer: Jhane Barnes, manufacturer: Tandus Centiva (USA). The evolution of floor tile lies in the use of several models with similar attributes, which can then be mixed and matched in a unique design to create a single product consisting of four entirely-different structures.

2. Indent carpeting; designer: Suzanne Tick, manufacturer: Tandus Centiva (USA). Drawing from her experience working in the textile industry, the designer brought a high-tech esthetic and innovation to the structure of the weave by adding a reserve thread to create an architectural pattern.

3. Fossil ceramic tile; designer: Kasia Zareba, manufacturer: Stone Source (USA). Series of fluidal ceramic tile – it's a paleontological collection consisting of 5 patterned structures in three colors (beige, brown, grey), which create the optical illusion of depth. Fossil – a prehistoric imprint left by flora and fauna in rock formations.

4. Art Select Stones tile; designer and manufacturer: Karndean Designflooring (USA). A collection inspired by the natural beauty of travertine, marble, slate and limestone. The most intricate patterns executed in manual embossing to bring out the unique grains and textures of real stone.

5. Sterling Row collection ceramic tile; designer and manufacturer: Walker Zanger (USA). Much like the elegant suit of a well-dressed gentleman, Sterling Row™ tile resembles fine fabric. Refined inlays of wood are combined with encrusted marble in different shapes and colors.



DESIGNERS

Phoenix Design



Phoenix Design (Germany) is one of the best studios in the world working in the field of industrial design. The studio's designers are multiple recipients of the most prestigious international design awards. The year 2016 was no exception. In February, the studio received two top prizes at once: the iF Design Award and German Design Award.

The pieces created by Phoenix Design cause esthetic delirium; that said, they are also technologically- and environmentally-impeccable elements of interior decor, household appliances and plumbing. Phoenix Design – always fresh ideas and innovative solutions.

The studio received the iF Design Award 2016 in the Design Office category for its development of the P3 Comforts collection for Duravit. The collection creates a modern concept of comfort out of simple geometric shapes, which make the interior esthetically calming. The slightly-elevated platform of the faucet separates it visually from the basin of the sink, while the built-in countertop makes the model even more convenient. Duravit and Phoenix Design have incorporated a modern understanding of comfort without sacrificing design esthetics. The success of the innovation is its achievement of the right balance between functionality and the magic of design.

German Design Award 2016 – one of the world's most high-profile international design awards. In 2016, Phoenix Design received 8 awards for the designs they developed for Hansgrohe, Hülpe, Hirschmann, Trumpf, Viessmann.

Phoenix Design always places its bets on clean modern lines, creating sought-after collections in the process. The designers are convinced: "When it comes to comfort, people's needs far exceed the purely physical aspects. Sensual, practical design can create a sense of tranquility and safety in the intimacy of the bathroom."

CONSUMER FOCUS



Antonio Citterio



BEST OF THE BEST

One of the undisputed leaders in terms of prizes and awards in the field of industrial design is the architect Antonio Citterio (Italy). Numerous companies use the witty and constructive ideas conjured up by the Maestro from Milan. At the core of his design credo – don't be a slave to fashion, find the hidden potential in things instead.

"I come up with things for real life – not to chart a new course or genre in the art of design. First and foremost – I'm an architect," says Antonio Citterio. That's why he always works with the space as a whole, blurring the line between an item's outward appearance and its functionality like a virtuoso, masterfully balancing between traditions and innovation, focusing attention on the "richness of simplicity."

The winner of the reddot award and iF Design Award 2016 was the "signature" series Axor Citterio E for Hansgrohe SE (Germany): thermostat valves, shower fittings and single-lever mixing valve. The valves impressed the jury with their architectural shape and differently-shaped thermostat taps, which makes it easier to remember their function. The elegant shower fittings make it possible to precisely angle the stream of water: comfort for children and adults alike. The mixer in this series was the simultaneous winner of numerous international awards. The jury praised it for its fusion of familiar and new, for its combination of outstanding quality and refined elegance. The single-lever mixing valve works just like a joystick, making it convenient and ergonomically user-friendly.

Architect and gentleman designer, whose works have masterfully withstood the test of time – Antonio Citterio represents the best of Italian design while maintaining focus on the consumer, which he sees as the secret to his success. The creative biography of Citterio includes the title "Royal Designer," awarded to him by the Royal Society of British Designers. Long live the maestro!



ECOMODEL



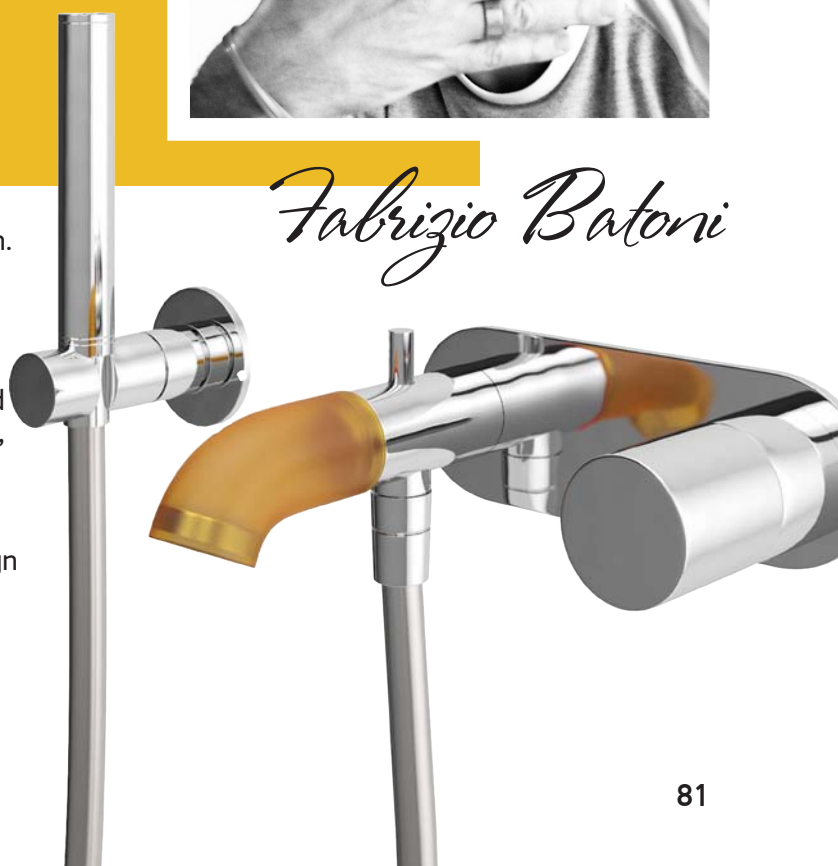
The POP model faucet developed by the architect Fabrizio Batoni for the ZAZZERI brand (Italy) won the most prestigious prize – the reddot design award 2015.

The project sprung from the desire to create a faucet that would harken back to the clean, pure architectural shape of the early design: a combination of straight and curved. Traditions and innovations blended into a harmonious and balanced medley of different materials: hard metal and soft silicon, creating an attractive, playful mix that's pleasant to both the eye and the touch. POP — a design that's sensitive to the consumer and the environment. It features special advancements that allow for significant water-consumption savings. You can change the color of the faucet and it will glow in the dark (become phosphorescent), in order to show you the way. You might say that POP is innovative in terms of structure and democratic in terms of design.

Fabrizio Batoni graduated from the school of design at the University of Florence, and gained tremendous experience in the field of industrial design and architecture working with such renowned architects and firms as Arketipo, Bonaldo, Bontempi, Mobilmetal, Esedr, Flou. Since 2006, the architect has been working a lot on bathroom designs. The Fabrizio Batoni studio has taken part in numerous architectural competitions, while its industrial-design models have received multiple international awards.



Fabrizio Batoni



DESIGNERS





Massimo Santi

CLASSICALLY INSPIRED

Massimo Santi – Italian architect. The arrival of Signor Santi at KERAMA MARAZZI was prompted by the development of a new business area for Russia's leading producer of ceramic tile – bathroom fixtures. "In 2016," says Massimo Santi, "we released two new collections of bathroom porcelain and other bathroom fixtures at once for the very first time in the history of KERAMA MARAZZI: Pompei and Buongiorno, which were a logical and organic continuation of the main Neapolitan collection of ceramic tile and ceramic granite."

KERAMA MARAZZI is a prime example of the special relationship that exists between Italy and Russia. On the one hand, it's Italian technology and its artistic approach to the creation of its world-renowned ceramic-ware, and on the other – it's the production capacity and labor resources of Russia with its vast potential and history of great achievements, making it possible to find original solutions and ensure high product quality.

Getting down to work on the new line of KERAMA MARAZZI bathroom fixtures, Massimo Santi looked to Naples, Pompei, Paestum, Ercolano. Brimming with emotions and feelings, he studied the country's great heritage – the architectural masterpieces of Italian classicism: theaters, columns, frescos. All of it was a source of inspiration in working on the new Pompei and Buongiorno collections, capable of giving a bathroom the enduring elegance that never goes out of style.





Diego Grandi

The Italian industrial designer Diego Grandi has a degree in architecture. As a designer, he specializes in the decor of finishing materials and interiors. What's more, Diego Grandi teaches at a number of Italian university and design schools, participates in shows and exhibitions in Italy and abroad, and conducts research in the area of visual design.

The latest project with Diego Grandi's signature is the Slimtech TYPE-32 collection: laminated tile for the LEA CERAMICHE factory. It's a collection with the amazing texture of wood and visual geometric effects, in which the bases of different graphic two-toned designs yield a multitude of combinations, creating an endless carpet. The idea stems from the combination of two layers. The first is a silk-screen that plays on the idea of recreating wood grain. The second is more obvious, based on a repeating braided line of four different structures. The combination of several lamella creates the zigzag effect of the traditional herringbone parquet floor. It's an original yet extremely universal range: four graphics, two tones, four colors: snow, honey, coffee, vintage.

The Slimtech TYPE-32 collection won the Good Design Award at the Chicago competition and the ADI Design Index prize. Diego Grandi's projects are always chosen for international exhibitions and design museums, such as the Quali cose siamo in Milan.

Diego Grandi's interest in the visual effect and structure of products led him to study the epidermal quality of materials and pursue intensive two-dimensional projects imitating such things as, well – herringbone.

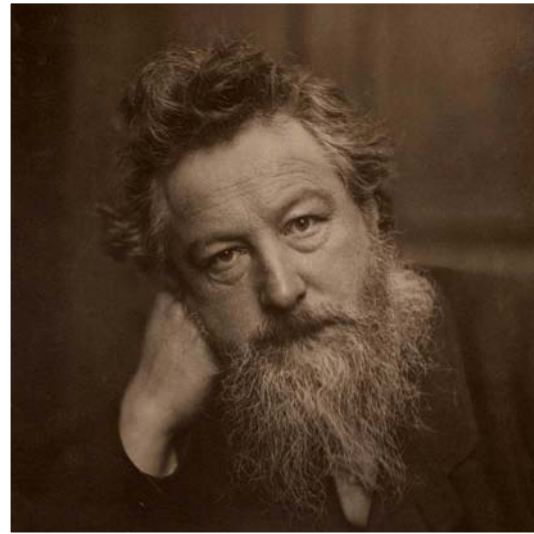
HERRINGBONE



WALLPAPERS & FABRICS



William Morris



The designers at MORRIS&Co, like the guardians of the values and heirs to the most famous English decor artist William Morris, bring the esthetics and spirit of the company's founding father to life in their work. The PURE MORRIS collection features numerous archive elements that have taken on new resonance in order to reflect the spirit of the times. The main focus are the cult William Morris patterns against a laconic background in a neutral color palette, while the ingenuity and integrity of the originals have been preserved.

"Given today's trend towards simplicity and a return to roots, we decided that the time had come to look at the iconic Morris prints from a fresh point of view. Consulting the archives, we found monotone patterns and wallpaper printed with various techniques, including the use of ground glass and metallized paints. It was a creative process of playing with the paints and print presses, and the final result was the origination of several new variations on the long-familiar patterns. The scale also changed, which helped to bring the collection to life. That's Morris in the context of contemporary life," explains Alison Gee, the lead designer at MORRIS&Co.

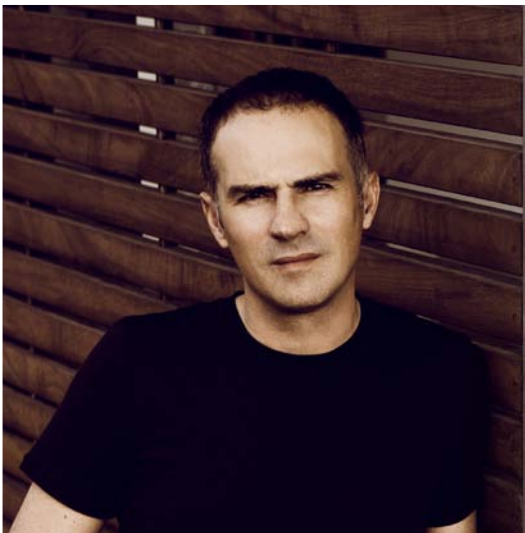
The wallpaper and fabric collection includes eight kinds of wallpaper, three of which were developed with the use of manual templating, while the rest were drawn from scratch in the finest intricate detail so as to convey the nature of the original pattern. Morris&Co wallpaper and textiles supplied by Manders retail outlets.



DESIGNERS



Ramon Esteve



LEADING ROLE

Spanish roots, knowledge of the history of material, architectural education and expansive thinking all inspired Ramon Esteve to create the Faces collection for the L'Antic Colonial factory. The latest generation in the Faces series of ceramic tile is rooted in geometry and the interplay between different volumes, yet the architectural esthetic of the collection continues. The new elements are represented in hexagonal and square shapes, and in colors: white, black, silver and gold, with matte or glossy finish. The tile can be protruding in the shape of a pyramid with sides of varying sizes, or flat but inclined, creating a "scaly" effect when viewed at an angle. The entire collection of Faces tile is made of ceramic and is distinct for its durability – it can be used to finish high-humidity zones like showers and bathrooms.

The architect Ramon Esteve is primarily geared towards ensuring that the design of each individual object has its own important meaning – and ceramic can play the leading role. "The traditional use of ceramic to finish high-humidity zones characterizes all of my early projects. But as I began to master the technologies involved, I started discovering other possibilities for ceramic, studying new formats. Ceramic is a universal material, one that's much more durable than others. As it ages, it maintains its noble look. The universality of the material lies in its ability to adapt to the unique color palette, texture and format of each individual project."

HOTEL • RESTAURANT • CAFÉ
HORECA
WORKSHOP
PROJECT DESIGN MARKETING

В Милане, столице дизайна
курс-интенсив
на русском языке
для специалистов
интерьерного
сектора

Unicredit Tower и площадь Gae Aulenti в Милане

Новый курс
26–30 ноября
2016 года

5 дней Теории и Практики

horeca@horecaworkshop.ru
www.horecaworkshop.ru

Московский международный мебельный салон

MIFS

2017

28-31
марта

Новые возможности для развития вашего бизнеса

- Специальные проекты
- Отраслевые конкурсы
- Тематические зоны
- Презентационные форумы
- Объединенная экспозиция с BATIMAT RUSSIA

МВЦ «Крокус Экспо»

г. Москва

Организаторы:



КРОКУС ЭКСПО

Генеральный информационный партнер:

SALON

+7 (495) 961 22 62

www.mmms-expo.ru